



Leading learning and skills



Leading learning and skills

The LSC Capital Handbook  
Wednesday 28<sup>th</sup> March 2007

RIBA Learning and Skills Conference  
Presented by:

Alastair Grindlay – Capital Programme Manager

# Welcome

# Introduction



Leading learning and skills

- LSC Capital handbook, progress and new developments.
- Building for skills, the capital prospectus
- Recently completed projects



# LSC Capital Handbook



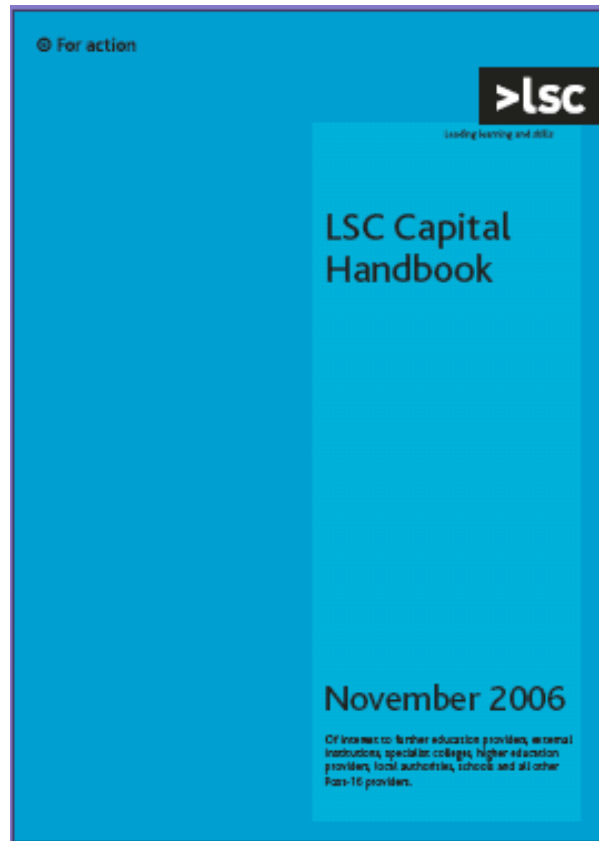
Leading learning and skills

# 01

# LSC Capital Handbook

>lsc

Leading Learning and Skills



## About the Handbook

- Published in November 2006
- Replaced Circular 03/13
- Published together with new capital forms booklet
- Both can be found on the new property services website along with all other relevant information.

## Client Capability

- First in the series is 'Design Guidance'
- Nightingale Associates commissioned to research and produce guidance
- Will be organic, adapting to changing design over the years
- Web based and interactive tool for all colleges to use
- Available in June 2007

# LSC Capital Handbook

>lsc

Leading learning and skills

## Procurement

- Framework Agreements
- Working with the South East Centre of Excellence to set them up
- All FE colleges to access consultants and contractors through the agreement
- Available during Winter 2007

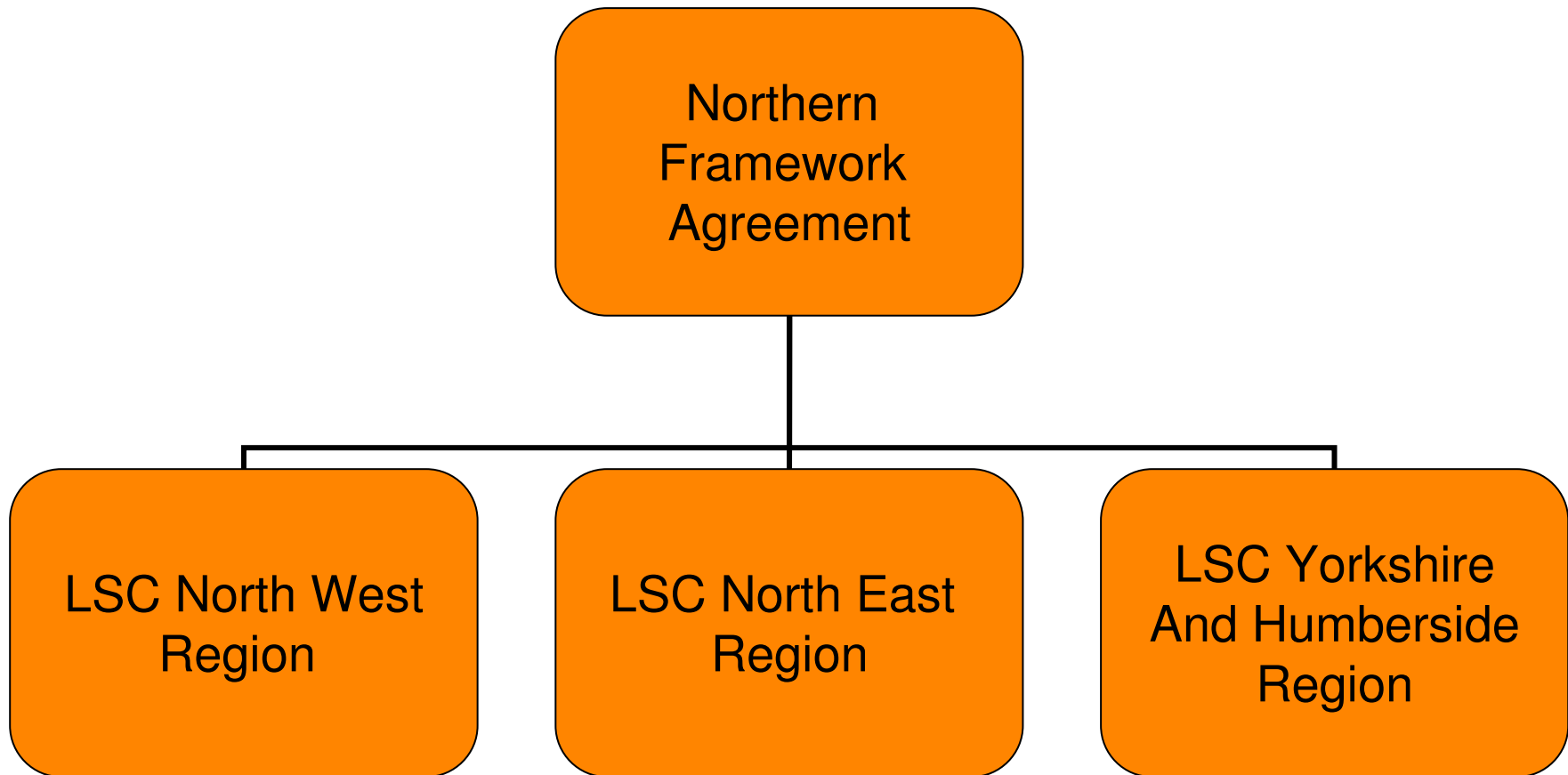


# LSC Capital Handbook



Leading learning and skills

## Procurement

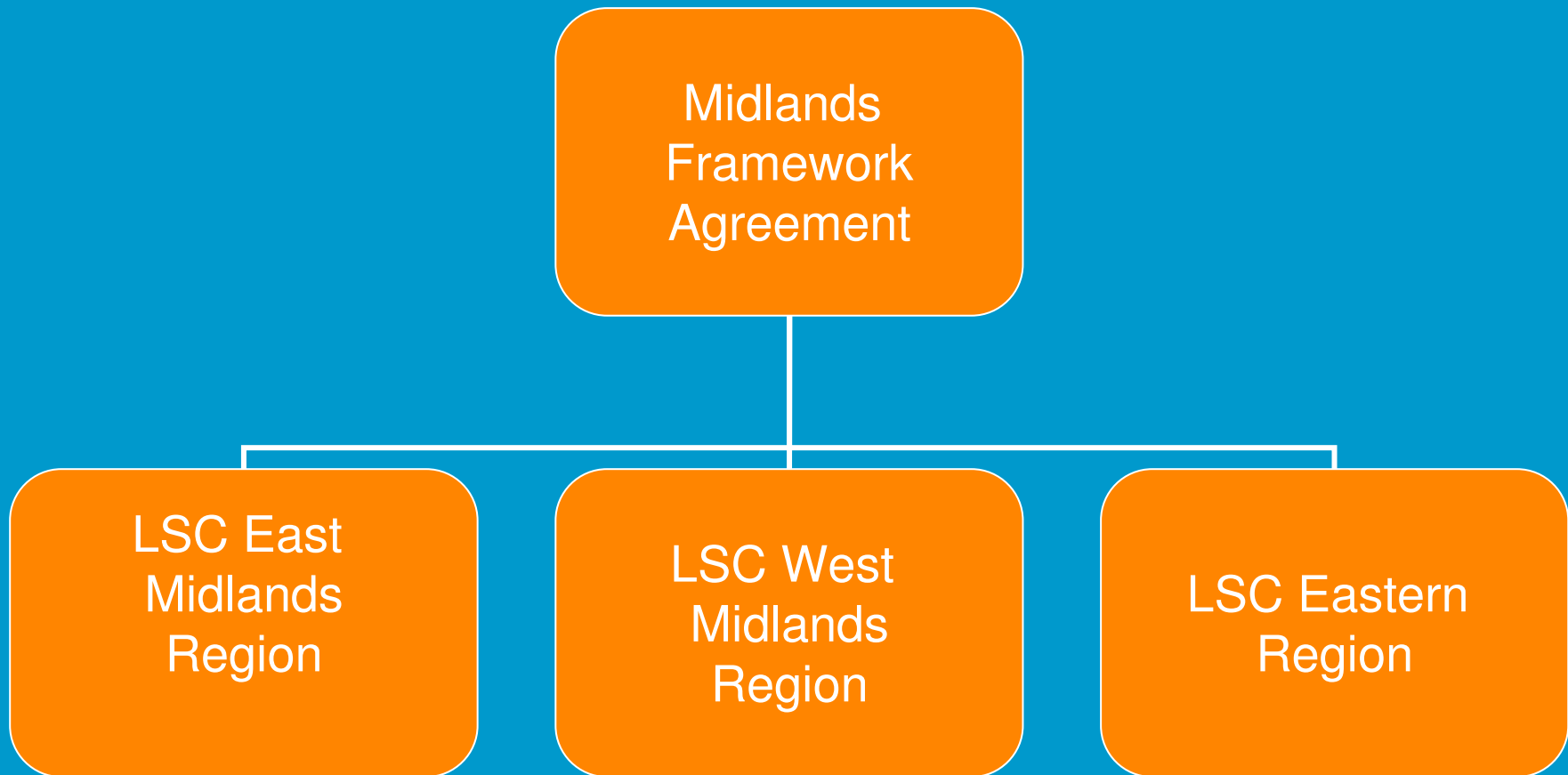


# LSC Capital Handbook



Leading learning and skills

## Procurement

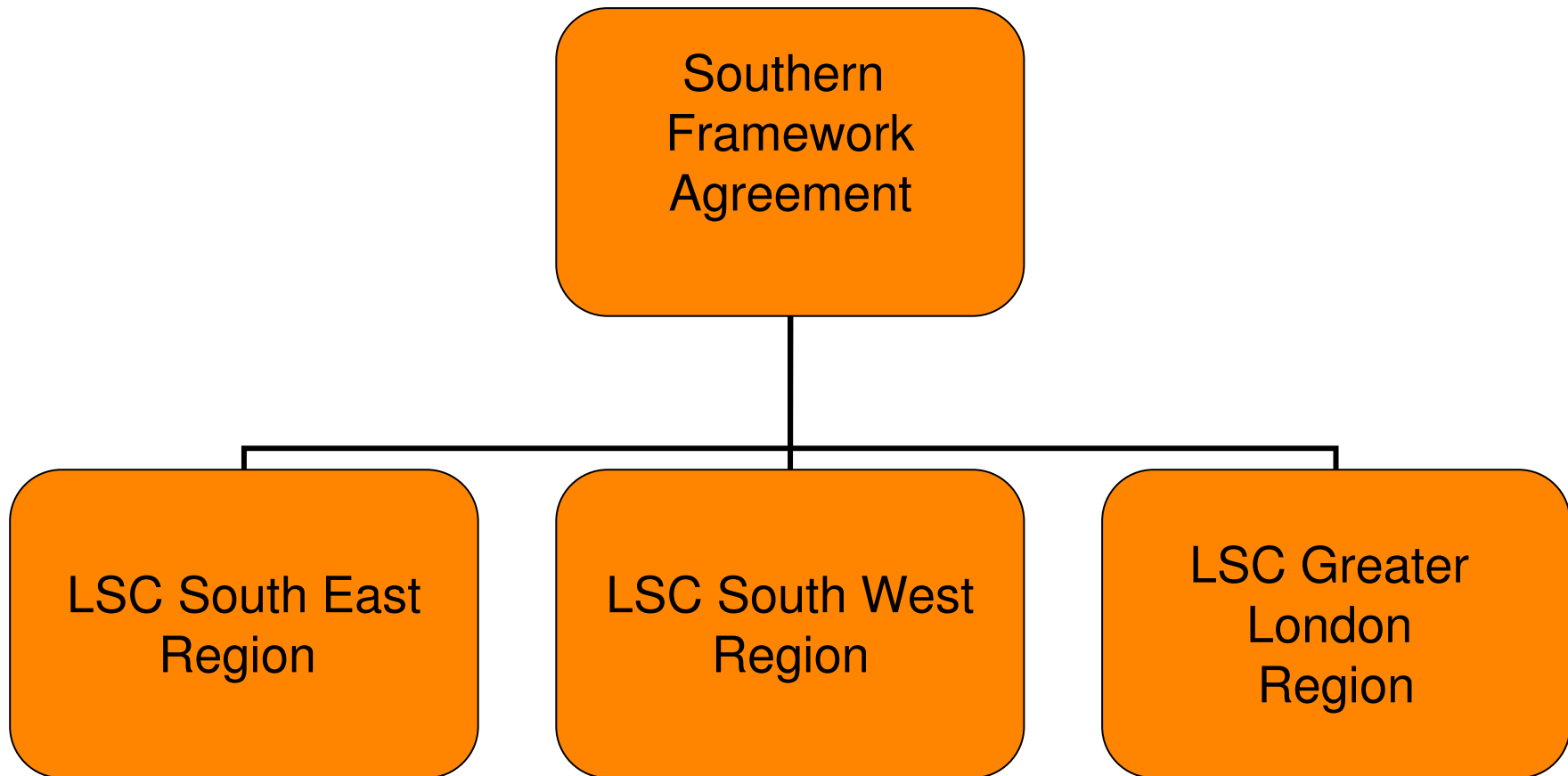


# LSC Capital Handbook



Leading learning and skills

## Procurement



# LSC Capital Handbook



Leading learning and skills

## Sustainability

- 10% net building costs for sustainable elements
- BREEM assessment model for FE sector

## eMandate

- Annual report for 2006 has been published on LSC website
- Over 90% participation rate in 2006
- Data collection exercise for 2007 started already

# LSC Capital Handbook



Leading learning and skills

## Space Utilisation Guidance

- Revisions
- New Category



# LSC Capital Handbook



Leading learning and skills

## LSC Property Services Webpage

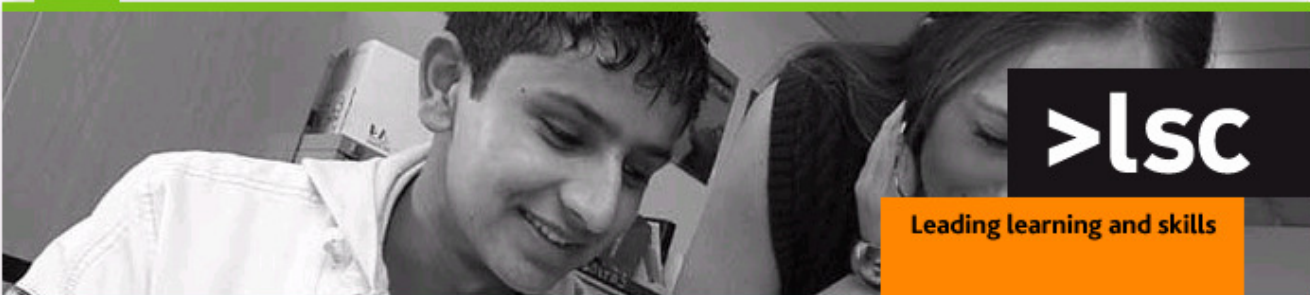
- ‘went live’ since the publication of the handbook.
- Contains all information on work of the property team, including guidance documents and contact information.
- Can be found at <http://propertyservices.lsc.gov.uk/>
- Can email your queries directly by following the FAQ link

# LSC Capital Handbook



Leading learning and skills

Home



16-19 capital  
Capital Committee  
Capital Handbook  
Design guidance  
eMandate  
faq  
FE Capital  
links  
nldc  
PCDL  
Photographs  
Space Utilisation

Search   | Accessibility

[Property Services](#) > [Property Services](#)

## Property Services [Print page](#)

The infrastructure and property services team, directed by Philip Head, encompasses:

- *Regional Property Advisers (RPAs)*
- *Claims Team*
- *Capital Policy Team*

It is a national team, which delivers within the regions through the RPAs, a £371 million budget (2006/07) to fund the delivery of 'world class buildings' within the Further Education sector.

### Key Contacts

Philip Head	Director of Infrastructure and Property Services	<a href="mailto:Philip.head@lsc.gov.uk">Philip.head@lsc.gov.uk</a>	02476 823254
Alastair Grindlay	Capital Programme Manager	<a href="mailto:Alastair.grindlay@lsc.gov.uk">Alastair.grindlay@lsc.gov.uk</a>	02476 823222
Pravin Parmar	Senior Property Adviser	<a href="mailto:Pravin.parmar@lsc.gov.uk">Pravin.parmar@lsc.gov.uk</a>	02476 823209

### Regional Property Advisers

# Building for Skills

# LSC Capital Prospectus



Leading learning and skills

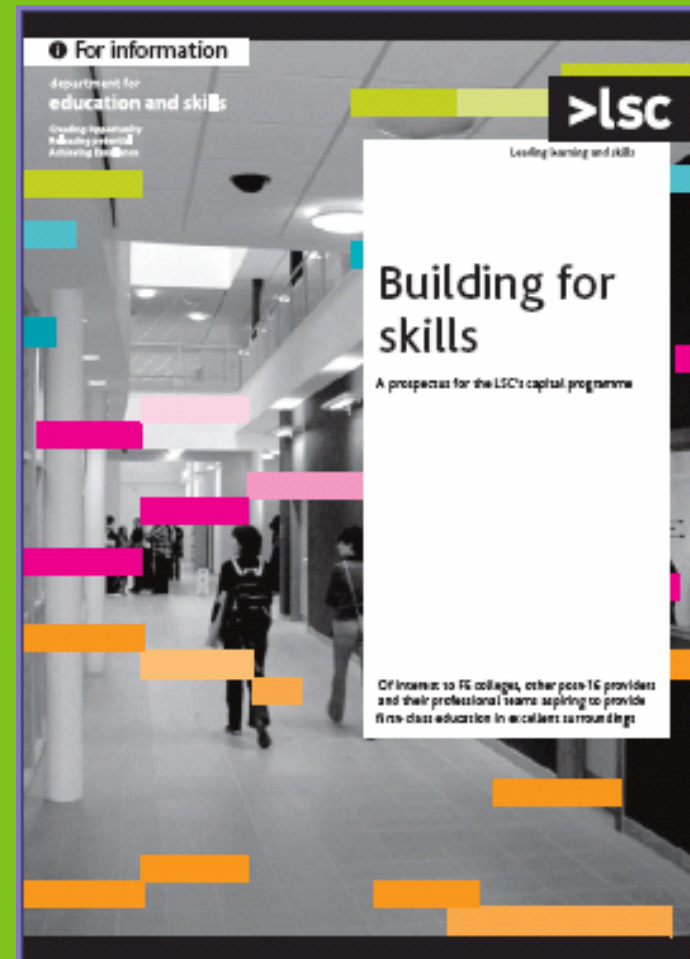
# 02

# Building for Skills Prospectus

>lsc

Leading learning and skills

- £300 million of capital investment lead to 3% increase in participation and success rates
- £1.8 billion capital investment in 632 projects since June 2001
- Average project cost increasing
- £500 million in 16-19 capital 2007-08



# Recently Completed Capital Projects



Leading learning and skills

03

# City of Sunderland College – 6<sup>th</sup> Form Centre



Leading learning and skills



**Details: The development of a new 6<sup>th</sup> form centre for City of Sunderland College on land previously occupied by a comprehensive school.**

**Usworth Sixth form centre.**

# City of Sunderland College – 6<sup>th</sup> Form Centre

>lsc



**LSC Region: Northern Region**

**Total Project Cost: £9,490,000**

**Approved: May 2005**

# Aylesbury College

>lsc

Leading learning and skills



**Total project cost: £26,411,000**

**Grant Support: 25%**



Leading learning and skills

**Thank you**  
**Alastair Grindlay – Capital Programme Manager**