

# Optimum Sports Hall

**A standardised approach to the  
provision of quality sports facilities**

**Paul Gibbins**  
**Operations Directorate**  
**Sport England**

# Why Optimum Sports Hall?

## Features of Existing halls

- Some good in parts
- Countless substandard halls
- Resemble industrial buildings
- Poorly planned & detailed
- Expensive to manage
- Expensive to maintain
- Uninspiring places

# Why Optimum Sports Hall?

## **Aims of project**

- Quality Benchmarks
- 4 Court Sports Halls
- Egan Report
- Better Public Buildings
- Best Value
- School and Community

# Specific areas of development

- Performance
- Capital/ whole life costs
- Customer appeal
- Construction
- Sustainability
- Operation/ management



# Energy & Environmental Impact

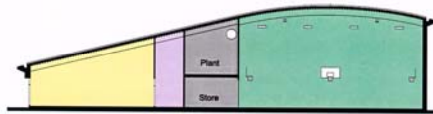
- Good thermal performance and insulation
- Direct gas black tube radiant heating in hall
- LPHW elsewhere
- Low energy lamps and fittings
- Modular boilers
- Independent extractor fan in main hall
- Dehumidification if appropriate
- BEMS + Controls for lighting, heating

# The standard Models



Plan

Large model  
1800 m2

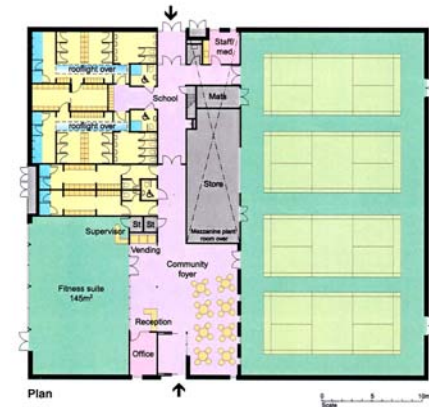


Typical Section



Plan

Medium model  
1500 m2



Plan

Small model  
1400 m2



# Approach and Arrival

- Location
- Audit
- Access
- Visible
- Clear signage
- Routes/ landmarks
- Simple layout
- Surfaces



# Entrances

Community



School



# Reception

- Automatic doors
- Control & Security
- Management costs
- Convenient
- Accessible counter
- Orientation
- Special needs
- Induction loops



# The sports hall







# Way finding



# Changing



# Materials



# Dance studio/ multi-purpose room



# Fitness suite






# Further development



# www.sportengland.org

Design  
Guidance Note

Access for Disabled People

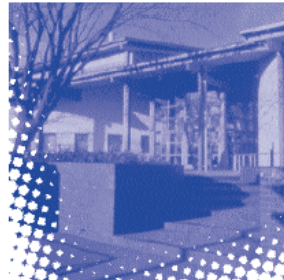


SPORT ENGLAND

The document cover for 'Access for Disabled People' features a blue and red header with 'Design' and 'Guidance Note' labels. The central image shows a man in a wheelchair flexing his muscles, with a white dotted pattern at the bottom of the image. The Sport England logo is in the bottom right corner.

Design  
Guidance Note

Sports Halls: Design



SPORT ENGLAND

The document cover for 'Sports Halls: Design' features a blue and red header with 'Design' and 'Guidance Note' labels. The central image shows the exterior of a modern sports hall with a glass facade, with a white dotted pattern at the bottom of the image. The Sport England logo is in the bottom right corner.