

Urban Exchange : The Souk

RIBA Student Competition Award Winners

The objective of the competition was to explore new visions and develop design proposals for 'the city'. It set the challenge of re-addressing the street culture and its human activities to the urban context. Students were asked to choose a site in an urban context, which they felt was in need of rejuvenation, and come up with ideas and concepts representing a modern interpretation of the Souk.

Jury Panel

Sir Michael Hopkins, Principal Judge
Peter Jackson, Architect Advisor, HH Ruler's Office, Sharjah (Chair of Panel)
Dr Yasser Elsheshtawy, UAE University
Dr Adil A. Al-Mumin, Kuwait University, Kuwait
George Katodrytis, American University of Sharjah

The Commended Schemes



Scheme G17 : Shruti Gupta

"This scheme selected the once bustling markets of the Jama Masjid and Red Fort precinct in Delhi, a main aim being to revive the lost glory of Asia's biggest Mosque. The judges noted the high quality presentation and especially appreciated the hand drawings. Although not fully translated into an architectural solution the scheme demonstrates a fascinating analysis, urban vision, and a strong response to the brief."



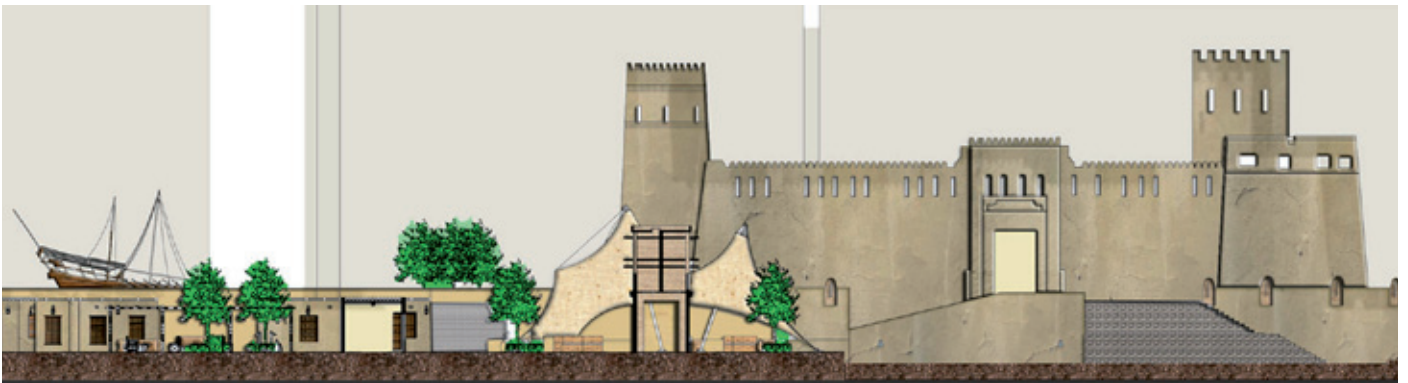
Scheme G24 : Haitham Mohammed Al Busafi, Aliya Sattar Al Hashim, Ahmed Abdullah Al Muqbali, Adi Al Farei

"The proposed site is within a beautiful natural park of mangroves behind Qurum beach in Muscat. The main idea is a mega-structure with a souk in the middle, under a multicultural cover of terraced roof gardens. The judges praised the daring quality of the scheme even though it fails to relate to an urban context and lacked depth in sensitivity to landscape and site context. However the judges appreciated its creative approach, the quality of presentation and visual impact of its striking graphics."



Scheme G27 : Nasreen Al Tamimi

“Set on the coastal edge of Fujairah, this scheme provides an interesting analysis in which the competitor has designed the conditions for a souk rather than a souk itself. The design focuses on creating an intricate shaded geometry linking a series of in-between spaces between scattered buildings on one edge of the city, and attempts to make a place for a bazaar that is accessible and hospitable. Although there is little focus on activities within, or with how people might use the spaces, this was an interesting response to the brief.”



Scheme G35 : Esraa Ali Osman Mohammed, Marwa Ahmed

“This scheme provides an imaginative new gateway area to Al Fahidi Fort in Bur Dubai. The theme is a contemporary solution focusing on the redevelopment of the area surrounding the fort, incorporating underground parking. Whilst the planning of the souk itself and its architecture remain largely unresolved, the competitor has demonstrated a good understanding of scale and some appreciation of the sensitivity of the site.”



Scheme G38 ; Navid Nikpour

“This project on a city block adjacent to Dubai’s Al Bastakiya district, creates a perimeter souk to frame a neighbourhood. Although the souk is somewhat isolated and the scheme doesn’t successfully integrate or transform the fabric of the city, the scheme does create some potentially beautiful public spaces (though not part of the souk). Whilst urban and social issues are disregarded the scheme’s interesting ideas are well presented, with interesting analysis and detail.”

Prize Giving + Exhibition Award Ceremony Abu Dhabi



Peter Jackson + RIBA President Ruth Reed



The Exhibition



Sir Michael Hopkins



Winning students with RIBA President Ruth Reed

Judging



Photos from judging session



Photos from judging session