



BEGINNINGS

Projects from the RIBA/ICE McAslan Bursary

Joann Tang GridCity

Can architecture become a useful education tool in secondary schools? Joann Tang's GridCity project involved mainly Bangladeshi students at a school in London's East End, and produced a collage of urban visions.



Pascale Scheurer

Like You Give A Damn

The People in Space project set up by Pascale Scheurer has triggered design debates, a new magazine, and the development of a 600-strong membership of young architects and designers.



Adam Khan

Big Barn

The New Horizon Youth Centre envisaged by Adam Khan brings a heightened sense of belonging to the homeless in a particularly gritty part of London. Khan has infused his design with ideas of convivially layered spaces, and emotional resonance.



Craig Bamford Shade Central

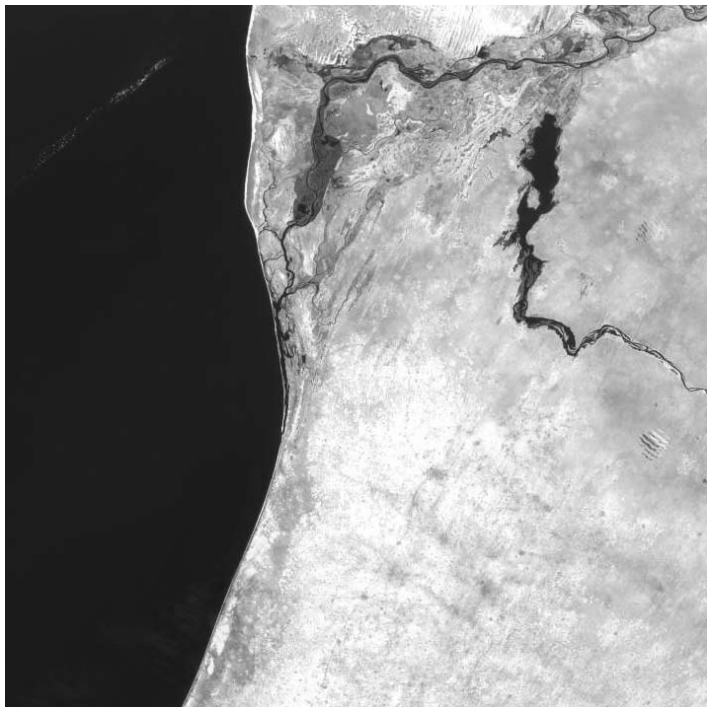
How can the searing heat and lack of shade trees in a small Indian farming village be mediated? Bamford's beautifully practical parasol structure, made from local materials and erected by villagers, has started an eco-projects programme.



Julia Bouvy

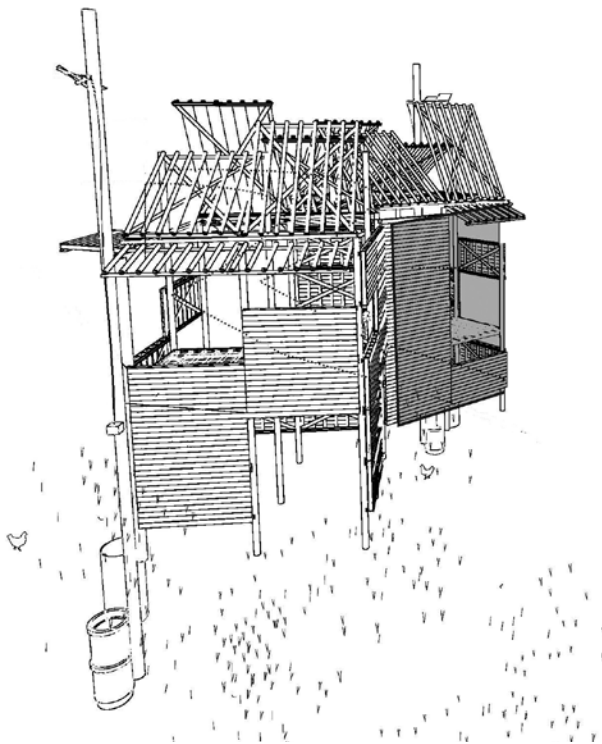
Biomacro Biomicro

The biodiversity of West Africa's Senegal River has been impacted by dams and uncoordinated environmental projects. Julia Bouvy is developing a strategic template for these schemes, and will also establish and monitor a small-scale eco-project.



Asif Khan and Julia King One Year House

Living conditions for 50,000 inhabitants in a Thailand-Burma border refugee camp are uneasy and enervating. Asif Khan and Julia King are collaborating with local people to develop sustainable family shelters.



Claudia Amico

Les Femmes Dynamiques

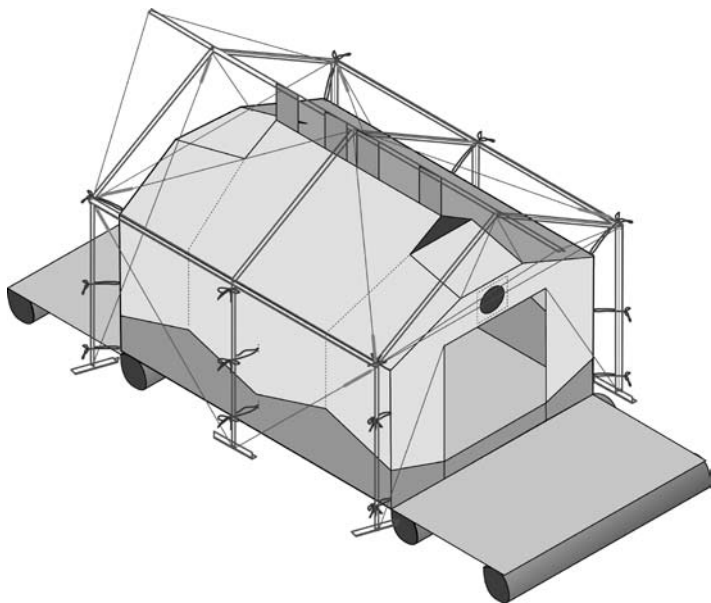
Encouraged by Claudia Amico, the village women of Joal, Senegal, are doing something unprecedented: they are building a market space using old tyres for foundations, and mud walls. They now plan to build a tourist and community facility.



Dr Tom Corsellis

Gimme Shelter

The supply of emergency shelters to areas hit by wars or natural disasters has not always provided fully functional equipment. Tom Corsellis is helping to develop stringent new international standards through the development of emergency transitional family shelters.



Nikki Linsell

Vernacular Values

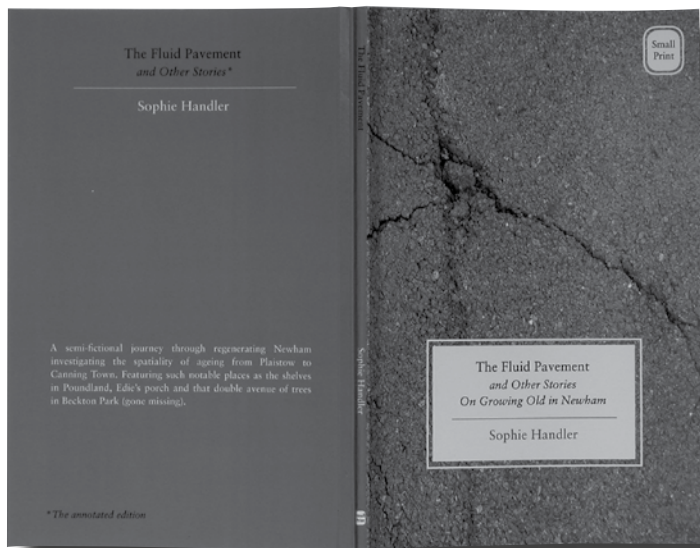
Is degraded vernacular architecture in the Saxon villages of rural Transylvania worth preserving? Nikki Linsell thinks it is, and her project is designed to maximise local perceptions of the cultural and economic worth of notable local buildings.



Sophie Handler

The Tea-Dance

The past, as Sophie Handler suggests in her novelistic reportage of life in an East London Borough, need not be a distant memory. Her book, *The Fluid Pavement*, uses older peoples' memories to re-energise public spaces.



John McAslan established a research-based initiative in 2004, with the Royal Institute of British Architects and the Institution of Civil Engineers as the RIBA/ICE McAslan Bursary. This promotes social and community improvements in the UK, and overseas, through collaborative projects developed by architectural and engineering students, and recent graduates. Since then the Bursary has attracted some 150 project proposals. A selection of these is featured here.

John McAslan + Partners
49 Princes Place
London W11 4QA
T +44 (0)20 7727 2663
F +44 (0)20 7221 8835
www.mcaslan.co.uk
mailbox@mcaslan.co.uk

For further information
and a copy of the JMP
Bursary Journal, contact
Alison Stawarz at
a.stawarz@mcaslan.co.uk

Bursary application
forms are downloadable
from the RIBA website.
Search for RIBA
McAslan Bursary at
www.architecture.com
or call the RIBA on
+44 (0)20 7307 3678

This leaflet is printed
on paper recycled from
100% post-consumer,
de-inked waste