



London Architect

Raising the profile of architecture and improving members' services

Sustainable Living by Design Exhibition 2006

Stanton Williams Architects, with the Woodbury Down Masterplan by HTA



Sustainable Living by Design is RIBA London's exhibition and competition for 2006. Over 50 projects entered, judging has been completed, and 32 projects have been shortlisted to form the exhibition. Innovative and inspirational proposals exploring sustainable living concepts and built works by London architects will be on show.

Urban living of today is entering a new phase, where convenience alone is no longer sufficient to satisfy the requirements of an urban dweller. Culture is undergoing a dramatic change with an increasing interest in eco-friendly homes as a response to climate change. Modern cities increasingly demand a mix of uses and a combination of live/work units. Affordability is becoming an important factor to keep key workers in cities and help students and young families get on to the housing ladder. As a response to growth in cities, densities are increasing, attracting a diverse mix of population. In wider Architecture and Planning today there is a better recognition of social factors and inclusion as developments have to address access for all ages and abilities, forwarding fast into a new era of a fairer world of living.

The exhibition will be open 01-28 June at the GLA, Queen's Walk, London SE1 2AA. The winners of the built and unbuilt project categories will be announced in a ceremony in June. See inside for details of the projects which will feature in the exhibition.

Architecture Week, 16-25 June



10th
Architecture
Week 2006
16-25 June

Architecture Week is the annual national public celebration of contemporary architecture that first started in 1997. The Week explores architecture and the built environment via the arts and culture in an entertaining and informative way. The Week includes walks, talks, tours, maps, events, visits to new buildings and architects' practices, exhibitions, family and children's activities, films and picnics. Architecture Week is an Arts Council England and Royal Institute of British Architects initiative in association with the Architecture Centre Network. See www.architectureweek.org.uk for details about activities in Architecture Week.

Sustainable Living by Design Exhibition 2006, June 2006

The full list of exhibitors in the Sustainable Living by Design exhibition is:



AROS Ltd - Flatpack Shelter Housing

Ash Sakula Architects - Housing



Bree Day Partnership - Alpine Close

ECD Architects Ltd - Cooper's Road Estate Regeneration

John Thompson and Partners - The Village at Caterham

PCKO Architects - Plas-y-mor

Adam Richards Architects - Micro City States

Kristian Peel - Floating sistaomabobe

aww - Flats in South London

baca (Barker and Coutts Architects) with MDA - 34 Unit

baca (Barker and Coutts Architects) with MDA - Life

Buschow Henley - New Cross Gate NDC

Cole Thompson Anders - Glastonbury House

Geraghty Taylor Architects - DD_FAST

Hawkins\ Brown - The Bottle Store

Horden Cherry Lee Architects - low.e-home

Levitt Bernstein Associates - Granville new homes

Matthew Lloyd Architects - Green Homes

MMM Architects - Whitehorse Lane

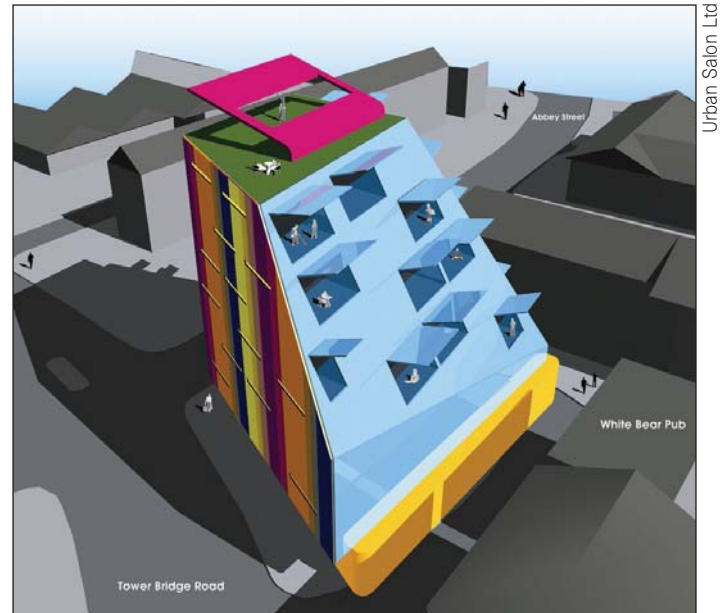
Russell Curtis (RCKA) - Housing

Riches Hawley Mikhail Architects - Three Gardens

Sassi Chamberlain Architects - 3M Living

Sheppard Robson - Housing

Stanton Williams Architects - Woodbury Down



Urban Salon Ltd - Bermondsey Square

Urban Salon Ltd - Northern Edge Housing

Natalia Andriotis - Mixed use development in Hastings

Yoshiko Torii - Mixed use development

Kathrin L. Feucht and Mark Boehmer : Urban intervention - Urban Network In Transition

Harry Dobbs - Parkland Community Project

Anthony Lau - Offshore Living

Studio Bednarski Ltd - Development

Designing with Natural Stone CPD event

Five RIBA members are sought to attend the week long Designing with Natural Stone CPD event in Verona. This takes place from 3 - 8 October, and is hosted by RIBA CPD Provider, Veronafiery, in association with the Italian Chamber of Commerce in the UK.

The event comprises workshops, seminars, factory tours, museum visits, city tours and much more, and culminates in a visit to the Marmomacc International Exhibition of Stone and Technology. There are also dinners and other social events thrown in. Members will be joined by architects from the USA, Canada, Australia, South Africa and India. The tour is led by a very inspiring American stone expert, Vince Marazita.

The programme varies each year. This year will include a visit to the Mario Botta-designed museum of contemporary art in Rovereto, and a guided tour of Carlo Scarpa's Banco Popolare in Verona. It is a very intensive but rewarding and fun week.

Veronafiery pay for meals, hotel and tuition. Members are obliged to pay for their own airfare and airport transfers, as well as a £200 cover for local expenses. There are direct flights to Verona from the UK. You might instead choose to fly into Bologna or Venice, and make a holiday of it, taking the train to Verona.

Those members who are interested should email joni.tyler@inst.riba.org no later than 30 June, with CV and digital images of recent work. Those people with experience of specifying and designing with stone on large projects will be given preference.

Visit www.marmomacc.com for further information.

Goodbye to Stephen Robinson



Stephen Robinson presenting the RIBA Awards lead plaque to Terry Pawson at St Mary's Garden Hall, Wimbledon, 2005

two days were working for the then Director General Alex Reid (now called Chief Exec) on an Information Co-ordination project that led to the establishment of the RIBA Information Centre. The Centre brought together the Information Unit from the RIBA Library and the switchboard team.

Stephen then undertook a role as Regional Services Co-ordinator for two days a week and led the staffing side of the



The three Stevens at Gainsborough Studios, 2004: Stephen Robinson (RIBA), Stephen Friel (client: Lincoln Holdings), Steven Marshall (architect: Munkenbeck + Marshall)

Regional Review 1999-2000. This led to the establishment of the list of Regional Core Activities.

Stephen's interest for politics has not been a secret and he is the Liberal Democrat Parliamentary Spokesperson for West Chelmsford. In addition, he served as a local and County Councillor for 11 years and stood in West Chelmsford at the 2001 and 2005 General Elections. In 2005, he took the Liberal Democrats up to second place in the General Election.

He left the RIBA in April 2006 to concentrate more fully on his political career.

Andrew Hanson, Chair of RIBA London, said:

London Region owes a big debt of gratitude to Stephen Robinson for the 6 years that he has led them as Director. He's made a brave decision based on conviction and we all look forward to seeing him on the podium of Chelmsford Town Hall gracefully accepting victory in the next general Election. London region has been transformed under his Directorship and will miss his guidance and advice, especially over the next few months.

Simon Foxell, Immediate Past Chair of RIBA London, said:

During Stephen's time as director of RIBA London, the region has moved from being an organisation largely focused on the close-knit world of architects and architecture, to one that is actively involved in the life and environment of London and the quest to make it a better city to live and work in as well as to visit. London Region under his direction remembered that the RIBA needs to be part of decision making and policy formulation in the city and a champion and lobbyist, not only for better design and architecture, but also for ensuring that conditions are in place which encourages good design to thrive. The emphasis on design in the London Plan, is in part a result of that far greater involvement.

RIBA London has, in the years of Stephen's directorship, become the partner and consultee of choice for very many other London groups and is seen as an organisation that can deliver real results. There can be no better accolade for Stephen's work for the RIBA, unless it be to note the great improvement of the standard of architecture in London during his time, as evidenced by the several London Stirling prize winners, and of course the winning of the Olympics for the city in 2012.

Shortlisted buildings for RIBA Awards 2006

Over 135 schemes were submitted for the RIBA Awards for Architecture 2006 in the Greater London region. The wide range of entries in London illustrate the different schemes that are taking place across the capital. Winners of the RIBA Awards will be announced on 23 June. Sixty schemes were shortlisted for a visit by the RIBA Awards jury and these were:

Lavender Sure Start and Children's Centre CR4 by John McAslan + Partners

Proudhouse, Amazon Street E1 by 11.04 Architects

Lock-keeper's Graduate Centre [Queen Mary, University of London] E1 by Surface Architects

Idea Store Whitechapel E1 by Adjaye/ Associates

Westfield Student Village [Queen Mary, University of London] E1 by Feilden Clegg Bradley Architects LLP

Institute of Cell + Molecular Science, "The Blizzard Building" E1 by Alsop Design Ltd + Anel Design + Management

Christ Church Spitalfields E1 by Purcell Miller Tritton

Donnybrook Quarter E3 by Peter Barber Architects

Private House in E8 by Lynch Architects

Amnesty International UK, New Headquarters EC2 by Witherford Watson Mann Architects

10 Paternoster Square EC4 by Eric Parry Architects/ Sheppard Robson Architects

Temple Bar, St Paul's Churchyard EC4 by Freeland Rees Roberts Architects (In association with Dep't of Technical Services at the City of London)

Wembley Park Station HA9 by Pascall + Watson Architects

Thomas Fairchild Community School N1 by Haverstock Associates



Private House in N1

Private House in N1 by Prewett Bizley Architects

The Summerhouse N16 by Ullmayer + Sylvester Architects

Housing in Nile Street + Provost Street N1 by Munkenbeck & Marshall

Newington Green Student Housing N16 by Haworth Tompkins

Private House in N5 by Chance de Silva

The Hub, Regent's Park NW1 by David Morley Architects

Parliament Hill School NW5 by Haverstock Associates



Central School of Speech and Drama

Central School of Speech and Drama NW3 by Jestico & Whiles & Associates Ltd

Private House in North London by Allford Hall Monaghan Morris

School Hall Refurbishment, Fitzjohns Primary School NW3 by Curl la Tourelle

The Pavilion, Lords Cricket Ground NW8 by Ettwein Bridges Architects



Helen Binet

Unicorn Theatre

Unicorn Theatre SE1 by Keith Williams Architects

John Perry Children's Centre, Dagenham by DSDHA

The City of London Academy (Southwark) SE1 by Studio E Architects

Siobhan Davies Company Headquarters SE1 by Sarah Wigglesworth Architects

Morrell's Yard SE11 by Stephen Davy Peter Smith Architects

Housing in Hanover Park SE15 by Alan Camp Architect

Evelina Children's Hospital SE1 by Hopkins Architects

Private House in SE15 by R.P.A., MOOARC, Flower Michelin

Private House in SE3 by Richard Grierson

15/25 Davies Street W1K by Kohn Pedersen Fox Associates (International) PA



Evelina Children's Hospital

Shortlisted buildings for RIBA Awards 2006

Dennis Gilbert/VIEW



Chelsea College of Art and Design, University of the Arts SW1 by Allies and Morrison

Private House in SE8 by DSDHA

National Police Memorial SW1 by Foster and Partners

Private House in SW13 by Michael Drain Architects

Crown Lane School SW16 by Building Design Partnership

Edge Apartments, Twickenham TW1 by Quad Architects

Alpine House, Royal Botanic Gardens Kew by Wilkinson Eyre Architects

Private House in TW10 by Stephen Ibbotson Architects

Private House + Gallery in W10 by Meadowcroft Griffin Architects

Private House in W11 by Sanei Hopkins Architects

Westbourne Grove Church Centre W11 by Stephen Ibbotson Architects

Private House in W11 by Gianni Botsford Architects Ltd

40 Eastbourne Terrace W2 by Fletcher Priest Architects

Munkenbeck & Marshall



Paddington Walk housing W2 by Munkenbeck & Marshall

New classrooms at Halffield School W2 by Caruso St John Architects

Private House in W2 by Caruso St John Architects

Private House in W4 by Alison Brooks Architects

House Conversion W9 by Neil Choudry Architects

The London Centre for Nanotechnology, [University College London] WC1 by Feilden Clegg Bradley



Sue Barr

South Acton Children's Centre W3 by Llowarch Llowarch



Helen Binnet

Gagosian Gallery WC1 by Caruso St John Architects

School of Slavonic and East European Studies, [University College London] WC1 by Short and Associates

City Lit WC2 by Allies and Morrison

Benjamin Franklin House WC2 by Patrick Dillon Architect



National Gallery

National Gallery London East Wing + Central Portico Phase I WC2 by Dixon Jones Ltd

Architects Benevolent Society

Join the Team

The London Architecture Biennale (LAB) is themed around 'Change'. You can play an important part in helping to change the lives of colleagues who are experiencing difficulty by taking part in the ABS 6km Fun Run on Sunday 18 June.

Starting at Myddleton Square (Angel) and finishing at the Tate Modern (Southwark) the run is full of interest, passing most of the major attractions and exhibitions on the LAB route. You'll wind your way through London's streets, stopping to catch your breath at St Paul's Cathedral. Then, once over the Millennium Bridge it's just a short lap round Borough Market before finishing at the Tate Modern. It's the perfect way to spend your Sunday morning and the run is gentle enough for most fitness abilities.

Support your charity and join the team by emailing cariad@absnet.org.uk or calling her on 020 7580 2823 today.

Leeds Castle

Last year everyone had a fantastic time at RIBA South East's Summer Party. So they're holding another on 9 June. Good food, music and company are guaranteed and the ABS gets the raffle proceeds. Last year the Society received over £1,500 and we hope that, with your support, this event is just as successful this year.

Summer Party tickets are £50 each: contact bridget.case@ribasoutheast.org to book. If you'd like to stay on and explore the Kent countryside, Bridget can supply a list of places to stay.

Join the Team!
Take part in
The Architects Benevolent Society
6km Fun Run
Sunday 18th June

Start at Angel and finish at the Tate Modern
raising funds for the ABS all the way!

Contact cariad@absnet.org.uk
for more details or log on to www.absnet.org.uk

43 Portland Place, London W1B 1QH • Telephone: 020 7580 2823
Charity registration no: 265139

bd
BUILDING DESIGN / THE MARKET OPPORT FOR ARCHITECTS

ARCHITECTS BENEVOLENT SOCIETY

LONDON ARCHITECTURE BIENNALE
18-25 JUNE 2006
WWW.LONDONARCHITECTUREBIENNALE.ORG.UK
Architecture Week

Reasons to visit The Building Centre

The **Information Desk** provides access to information on thousands of building products including 3,500 different product catalogues and brochures from leading and innovative manufacturers, available for free collection.

Our **Building Products Library** serves as a valuable resource when specifying materials for building projects and locating individual products, including technical data, trade names, services and suppliers.

The **Product Exhibition** features exhibits that are regularly updated with new and innovative products. The recently opened '**Eco-Zone**' Gallery features sustainable building materials and products. The gallery will continually highlight manufacturers and products that preserve the natural environment within the built environment.

Our **New Bookshop** offers a wide selection of publications relating to Architecture, Design and Building including construction related contracts, regulations and BSi publications.



The Building Centre is home to **New London Architecture (NLA)** a permanent exhibition space presenting buildings and projects currently transforming the face and shape of London. A giant model of central London covering 33 London boroughs creates a wider understanding of the importance of architecture. Supported by numerous seminars and temporary themed exhibitions throughout the year.

26 Store Street, London WC1E 7BT Tel: 020 7692 4000
Open 9.30 - 18.00 Mon - Fri 10.00 - 16.00 Saturdays
www.buildingcentre.co.uk

Branch News

Richmond, Kingston and Merton Branch Annual General Meeting 2006

The Richmond, Kingston & Merton Branch AGM takes place on Tuesday 6 June, at 7:00 for 7:30pm at 24 Fieldend, Twickenham TW1 4TF, a Span house designed by Eric Lyons. A buffet meal will be provided. A tour of the house will follow led by James Strike, and a short illustrated talk about the life and times of Eric Lyons and Span housing.

The cost is £15 per person. Members are welcome to bring a guest, but due to limitations of space a total of only 30 places is available, so please book early.

For further information and to make nominations for chairman, vice chairman, treasurer or secretary on the committee for next year contact Douglas Emslie, current chairman, at dougemslie@hotmail.com or telephone 020 7736 6162 (office)

To reserve a place please write with a cheque made payable to RIBA Richmond, Kingston and Merton Branch to the branch honorary treasurer, Jim Deasley, 9 Aquarius, Eel Pie Island, Twickenham TW1 3EA.

Croydon, Sutton, and Bromley Branch

Branch Annual Dinner - from 7.30pm on Wednesday 21 June 2006 at Croham Manor Golf Club, Croydon. Please contact Alan Longhurst for details 020 8665 5252.

Worshipful Company of Chartered Architects Travel Club

24 - 31 August 2006



Highlights of the trip include a Chicago River Architecture cruise; the Chicago Architecture Foundation tours including tours of historic and modern skyscrapers, and Millennium Park (Frank Gehry, Pritzker Pavilion) tour; visit to the Frank Lloyd Wright Home & Studio and Frederick C. Robie House; a coach excursion to the Illinois Institute of Technology campus to see Mies van der Rohe, Rem Koolhaas, Helmut Jahn works; visit to the S. C. Johnson Wax Administration Building and an in-depth tour of Fallingwater (Frank Lloyd Wright), before it opens to the public. The trip will also include an Architecture tour by bus (overview

of Pittsburgh and environs, including residential districts with houses by Robert Venturi, Richard Meier, Walter Gropius, Taliesin apprentices Cornelia Brierly and Peter Berendtsen, others) and on foot (Art Deco and other downtown buildings, including the Allegheny County Courthouse by H. H. Richardson) led by the Historic Collections Director of the Pittsburgh History & Landmark Foundation.

The cost of this trip will be \$995.50 - the sterling equivalents at current rates of exchange (at the time of going to press) are £570 for the transatlantic flights and £875 for the internal air and ground transportation, hotel accommodation etc.

For details of this trip, contact the Clerk of the Company, David Cole-Adams, on 020 8292 4893, e: wccaclerk@blueyonder.co.uk

RIBA Awards Dinner, 23 June 2006

Celebrate the best of British architecture at this year's RIBA Awards Dinner. Over 500 projects by RIBA members across the UK, the European Union and the rest of the world have been entered in this year's RIBA Awards programme. Join the winning architects, clients, contractors and consultants for this essential review of the year's most outstanding architecture, and find out who has won the first Lubetkin Prize for the best building outside the EU.

Friday 23 June, 7pm - 1am in the Grand Ballroom, London Hilton on Park Lane, W1

Visit www.architecture.com to book.

RIBA Trust

RIBA Awards Dinner 2006

Credit where it's due

The RIBA Awards are the industry's toughest, recognising the very best of architecture from home and abroad

Meet and mingle with the winners at an evening of celebration and inspiration

Friday 23 June
7pm - 1am
Grand Ballroom
London Hilton
Park Lane W1

Tickets:
£150 each (Ex VAT)
Info:
www.architecture.com/awards
awards@inst.riba.org
T 020 7736 6176

Made partner | Sponsored by | Supported by

AJ | SIV | hobs

Research Grant

RIBA members and present and former RIBA staff are invited to apply for a research grant from the Gordon Ricketts Memorial Fund.

The Fund was set up in memory of Gordon Ricketts, RIBA Secretary from 1959-1968. It awards bursaries of up to £2,000 every two years to help an individual take on research that will advance the cause of architecture. Applications, in the form of a 500-word statement, must be submitted by 31 July 2006. Shortlisted applicants may be interviewed and a decision made by 31 October 2006.

For application details email Rachel Henley, Chief Executive's Assistant, at rachel.henley@inst.riba.org

June 2006

TUE 6, RICHMOND, KINGSTON AND MERTON BRANCH ANNUAL GENERAL MEETING, 7:00 for 7:30pm

at 24 Fieldend, Twickenham TW1 4TF, a Span house designed by Eric Lyons. A buffet meal will be provided. A tour of the house will follow led by James Strike, and a short illustrated talk about the life and times of Eric Lyons and Span housing. For further information and to make nominations for chairman, vice chairman, treasurer or secretary on the committee for next year contact Douglas Emslie, current chairman, t: 020 7736 6162 (office), e: dougemslie@hotmail.com

Cost is £15 per person. To reserve a place please write with a cheque made payable to *RIBA Richmond, Kingston and Merton Branch* by **no later than Friday 26 May** to the branch honorary treasurer: Jim Deasley, 9 Aquarius, Eel Pie Island, Twickenham TW1 3EA.

THU 8, CONSERVATION OF BUILDINGS: MAKING IT HAPPEN!

at the Marylebone Campus of the University of Westminster, London, 35 Marylebone Road, London, NW1 5LS. The conference aims to give you the opportunity to get practical advice on managing building conservation projects and listen to experts on funding, contracts, skills and the political process impart their knowledge and wisdom. Contact: Szilvia Galambos, University of Westminster, t: 0207 911 5000 x3220, e: galambos@wmin.ac.uk or see: www.buildingconservationforum.co.uk

WED 14, HOW TO MAKE YOUR ENGINEER TURN GREEN, 8:30pm

by Nick Maclean (Nick MacLean Civil & Structural Engineers) at Avenue House, 17 East End Road, Finchley, N3 3QE. Learn some awkward questions to put to your structural Engineer, and hear examples of engineering solutions to reduce the waste of high energy consuming materials and excessive foundations. Cost £5.00. Contact the event organiser, Steven Bickler, e: steven.bickler@networkrail.co.uk

16 - 25 JUNE: ARCHITECTURE WEEK. 2006 marks the tenth anniversary of Architecture Week, the annual national public celebration of historical and contemporary architecture in the UK. The week aims to explore architecture and the built environment via the arts and culture in an entertaining and informative way, with a rolling schedule of activities organised and co-ordinated through Arts Council England, the RIBA and architecture centres across the country. This year's theme is 'The Power of Ten' and the week will showcase over 500 events across the UK - many organised on the idea of 10 - featuring celebrated architects and celebrities, exhibitions, talks and tours. Full details can be found at www.architectureweek.org.uk

FRI 23, HIGHLIGHTS OF THE ARCHITECTURE ROOM in the Reynolds Room, Royal Academy, W1, 6.30- 7.30pm. Peter Cook RA, joint coordinator of the Royal Academy's Summer Exhibition, hosts this lively event introducing the ideas behind the selection and hanging of the Architecture Room. It sheds light on the choreography of the gallery, illuminating key works

and introducing young architects in this year's Summer Exhibition. Cost £10/ £5 students (incl. lecture, exhibition entry and drink).

WED-28- FRI 30, RTP1 PLANNING CONVENTION at the Queen Elizabeth II Conference Centre, Westminster, London SW1P 3EE. The 2006 Convention aims to raise delegates' awareness of the latest practically based approaches to planning. Every year the Convention delivers both practical advice and offers leading thinkers the opportunity to talk about their work and to share with planners from across the country, and often, around the world. This Convention is about raising the bar further - for planners to achieve more and help put sustainable development at the heart of planning. Cost: Members £150 +VAT Non members £250 +VAT. Book via www.theplanningconvention.co.uk or call 0845 1209602.

July 2006

SAT 8, PUBLIC OPEN DAY AT THE ROYAL COLLEGE OF PHYSICIANS, 11am-4pm

at 11 St Andrews Place, Regent's Park, London, NW1 4LE. Explore Sir Denys Lasdun's acclaimed masterpiece set in the historic beauty of Regent's Park. The open day is the only opportunity in 2006 for the public to view the building where 16th Century tradition meets 20th Century modernism. The RIBA awarded Lasdun their Trustees' Medal in recognition of his work on the College, considered to be 'the best architecture of its time anywhere in the world'. With its tiered portrait galleries, soaring plate-glass windows, Marble Hall and domed Council Chamber, it is easy to see why it was Grade I listed by English Heritage in recognition of its architectural importance. Admission free and details are at: www.rcplondon.ac.uk/openday

MON 12 - TUE 13, TREES AND DEVELOPMENT: THE ROOTS TO BEST PRACTICE

at the Society of Chemical Industries (SCI), 14/15 Belgrave Square, London SW1X 8PS. Organised by The Arbor Centre, in conjunction with Cheshire Woodlands, this CPD seminar has been tailored to deliver an up-to-date, practical, and effective understanding of the role that trees play in the development process to Architects, Developers, Engineers, Landscape Architects, and Planners. Core to the proceedings are the implications of the new and updated BS 5837: 2005 'Trees in Relation to Construction'. The revised Standard has been substantially elevated from its previous status as a 'Guide' to that of 'Recommendations'; with important implications for all development-related professionals. For details, see: www.arborcentre.co.uk/index.php?n=12, or call The Arbor Centre on 01225 351849.

COPY DATE FOR NEXT LONDON ARCHITECT
 6 JULY 2006
 SEND TO LIZ WALDER, RIBA LONDON
liz.walder@inst.riba.org