



## London Architect

Raising the profile of architecture and improving members' services

### Brick House is London Building of 2006

Helene Binet



A house using a limited palette of brick and concrete has won the RIBA London Building of the Year Award 2006. Brick House in West London by Caruso St John utilises a leftover backlands plot at the end of a mews terrace. It beat off competition from twenty-one other award-winning buildings across Greater London to take the overall prize.

The announcement was made at the RIBA London Awards ceremony on 11 September 2006. Andrew Hanson, Chairman of RIBA London presented the award-winning team with their certificates.

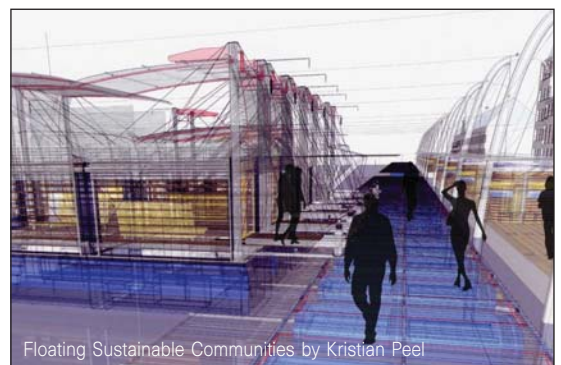
The jury said: "This is a brave, intelligent, original study in the use of ordinary materials, developed in both a simple and sculptural way. The warmth and subtlety of the interiors amazed and impressed us; the varying planes and use of light is masterful."

The judges for the award were Andrew Hanson (Chairman, RIBA London), Phyllida Mills (Penoyre + Prasad), Terry Pawson (Terry Pawson Architects), Annalie Riches (Riches Hawley Mikhail Architects) and Henning Stummel (Henning Stummel Architects).

### Sustainable Living by Design exhibition at RIBA HQ

The annual exhibition exploring the ideas and ways that people live now, and innovative, inspirational proposals exploring the changing nature of sustainable living will be in Gallery 2 at the RIBA from 6 November to 2 December 2006.

Floating Sustainable Communities by Kristian Peel (right) is one of the inspirational proposals for sustainable living featured in the exhibition.



## Sustainable Living by Design exhibition

Have you visited the Sustainable Living by Design exhibition yet? There will be another chance to see it at the RIBA, 66 Portland Place, London W1B 1AD, 6 November – 2 December 2006. The exhibition will be in Gallery 2 on the second floor of the RIBA's London headquarters.

The 32 exhibitors featured in the exhibition are:

**Adam Richards Architects** – Micro City States

**AROS Architects** – Flatpack shelter housing – Goma, Democratic Republic of Congo

**Ash Sakula Architects** – Peabody Housing, Boxley Street

**aww** – Croydon Cultural Quarter

**baca (Barker and Coutts Architects) with MDA** – The meadows – 34 unit low-energy housing scheme

**baca [Barker and Coutts Architects]** – Life – Long term initiatives for flood risk environments (below)



**Bree Day Partnership** – Sustainable Community, Alpine Close, Maidenhead

**Buschow Henley** – New Cross Gate NDC

**Cole Thompson Anders** – Glastonbury House, Westminster

**ECD Architects** – Cooper's Road Estate Regeneration, Southwark, London, SE1

**Geraghty Taylor Architects** – DD\_FAST

**Hawkins/Brown** – The Bottle Store

**Hornden Cherry Lee Architects** – low.e-home

**John Thompson & Partners** – The Village at Caterham (below)



Ben Luxmoore

**Kristian Peel / Assael Architecture Ltd** – Floating Sustainable Communities

**Levitt Bernstein Associates** – Granville New Homes

**LOOP Architecture and Harry Dobbs Design Ltd** – Parkland Community Project

**Matthew Lloyd Architects** – Green homes, Sheffield

**MMM Architects LLP** – Whitehorse Lane

**Natalia Andriotis** – Network City – Housing Development in Hastings

**Offshore Living** – Recycling Boats and Marine Structure – Anthony Lau

**PCKO Architects** – Integrated Care Centre for the Elderly, Plas Y Mor, Burry Port, Carmarthenshire

**RCKa Limited** – Reinventing the Terrace

**Riches Hawley Mikhail Architects** – Three Gardens (below)



**Sassi Chamberlain Architects** – 3M-LIVING: Sustainable living through Maximum Density, Maximum Quality and Maximum Green Design

**Sheppard Robson** – SixtyK House

**Stanton Williams** – Communities in the sky

**Studio Bednarski Ltd** – Sustainable Community, Kariobangi South, Nairobi, Kenya

**urban in(ter)vention: Kathrin L Feucht, Silke Junker and Mark A Boehmer** – UNIT – Urban Network In Transition

**Urban Salon Ltd** – Bermondsey Square

**Urban Salon Ltd** – Northern Edge Housing

**Yoshiko Torii** – Hamlet, Ophelia

*Apologies to Kristian Peel (Assael Architecture), whose work features on the front cover of this issue of London Architect. His work was incorrectly titled in a previous issue.*

## RIBA Stirling Prize and RIBA Special Prizes

The RIBA Stirling Prize 2006 will be announced on 14 October, live on Channel 4.

The RIBA Stirling Prize is given for the RIBA Building of the Year. It is run in association with The Architects' Journal and is presented to the architects of the building which has been the most significant for the evolution of architecture in the past year.

The winning architect receives a cash prize of £20,000. The prize is named after the great British architect Sir James Stirling (1926-1992).

The shortlisted buildings were visited in September by the RIBA Stirling Prize jury, who reconvene on the afternoon of the RIBA Stirling Prize Dinner to make their final decision.

Three London buildings have been shortlisted for the RIBA Stirling Prize 2006:

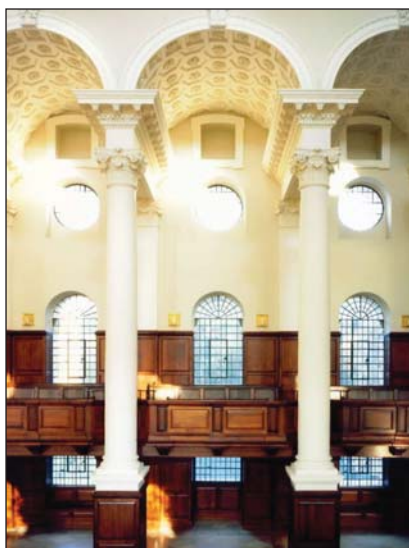


1. **Evelina Children's Hospital** by Hopkins Architects (above)

2. **Idea Store**, Whitechapel by Adjaye Associates

3. **Brick House** by Caruso St John Architects

London buildings also feature on the shortlists for the RIBA Special Prizes:



**Christ Church Spitalfields** (left) by Purcell Miller Tritton in association with William Whitfield and Partners is one of four schemes shortlisted for the Crown Estate Conservation Award. This Award is presented to the best work of conservation that demonstrates the successful restoration and/or adaptation of an architecturally significant building.



**Wrap House** (above) by Alison Brooks Architects has been shortlisted for both The Stephen Lawrence Prize and The Manser Medal. The Stephen Lawrence Prize is sponsored by the Goldschmied Trust and rewards the best examples of projects with a construction budget of less than £1 million.

The Manser Medal is awarded for the best one-off house or major extension designed by an architect in the UK and is always a closely fought contest. Apart from Wrap House, two other London buildings feature on the Manser Medal shortlist: Brick House by Caruso St John Architects and Light House by Gianni Botsford Architects Ltd.



**The Lock-keeper's Graduate Centre** (above) by Surface Architects is also on the Stephen Lawrence Prize shortlist. The client of the Lock-keeper's Graduate Centre, Queen Mary University of London, has been shortlisted for the RIBA Arts Council England Client of the Year, with the Blizzard Building by Alsop Design Ltd + Amec Design & Management. The RIBA Arts Council England Client of the Year award honours the key role that a good client plays in the creation of fine architecture.

Paul Tyagi

James Brittain / VIEW

Christobel Palma

Hufton and Crow

## RIBA London Autumn CPD

Continuing Professional Development (CPD) obligations exist to help ensure that qualified professionals maintain their competence to practice. This is true in countless professional sectors in the UK.

At its very basic level, CPD is for consumer protection. It is also a way of ensuring that architects keep up-to-date within a rapidly changing profession. CPD should also enhance an architect's current and future development.

All chartered members of the RIBA are obliged to do CPD every year. This is true no matter where in the world the member lives or what sort of work is undertaken. Only fully retired members are exempt from this obligation.

RIBA London is providing more seminars than ever to help you reach your CPD requirements for the year.

All seminars are at the same venue, and price (except seminar RIBA SFA - 12 December which is £42.13 [£35.00 + £6.13 VAT + £1 ABS] and CPD Providers Network Event - 21 November, which is a free event).

To make a booking, download the booking forms from: [www.architecture.com/ribalondon](http://www.architecture.com/ribalondon)  
t: 020 7307 3681, e: [riba.london@inst.riba.org](mailto:riba.london@inst.riba.org)

**Venue:** RIBA, 66 Portland Place, London W1B 1AD

**Fee:** Early Bird Discount: £70.00 (£58.72 + £10.28 VAT + £1 ABS). If booked less than 2 weeks in advance: £80.00 (£67.23 + £11.77 VAT + £1 ABS)

### Part L Update: Tuesday 10 October, 2-5pm

The seminar will provide an update on the current position of Part L legislation including the new approved documents that came into force on 6 April 2006. They will have a radical effect on how designers think about thermal efficiency both in new and existing buildings. These documents will also implement some of the requirements of the Energy Performance of Buildings Directive.

The new Approved documents will be in four parts: AD L1A for new dwellings, ADL1B for work in existing dwellings, ADL2A work in new buildings other than dwellings and ADL2B for work in existing buildings other than dwellings.

It will be essential that all involved in the design of buildings have an understanding of the proposals in Part L as changes in the design at all stages may have an effect on the thermal performance and calculation of its carbon emissions.

The seminar will review the documents and will present a number of case studies setting out how they apply to different buildings.

**Speaker:** Martin Conlon, is one of the founding Directors and Senior Management team of JHA Innovation Ltd.

### JCT Contracts Update: Thursday 19 October, 2-5pm

The family of JCT Contracts, published last year, has now completely replaced the old 1998 editions. You must not mix and match the new contracts with the old as the old JCT Contracts are being phased out.

How have the contracts changed? How is the impact of those changes unfolding? At this seminar, contracts expert Philip Burkill will guide you through the new forms of contract and highlight the significant amendments and how they will affect you.

At the seminar you will:

- Get an overview of the whole JCT 2005 family
- Understand the layout of the main contracts
- Go through worked examples of completed contract documents
- Examine the impact of the updated contracts on building projects
- Find out how to avoid costly mistakes!

**Speaker:** Philip Burkill TD FRICS MCIQB MCI Arb MAE, Registered Adjudicator (AICA) is both a Chartered Quantity Surveyor and a Chartered Building Surveyor. His practice, Burkill Johnson, provides a range of services including involvement in Expert Witness and Expert Opinion and in Adjudication.

### Diagnosing Building Defects: Tuesday 14 November, 2-5pm

It is essential that all building professionals must have a thorough understanding of building defects. This half-day seminar will make a comprehensive examination of defect diagnosis:

- What is a defect?
- Where defects are occurring
- What is the cause of the defect?
- What is the remedy?
- What is a failure?
- What are common failures?
- What is being missed in survey inspections?

The afternoon will also cover the life span of buildings and issues of health in buildings.

Typical building defects:

- Expansion and contraction, shrinkage, temperature and moisture/humidity, different materials
- Lateral restraint problems, roof spread
- Corrosion and rot, chemical attack
- Simple concrete defects
- Accidental damage
- Replacement windows and other loading problems
- Vibration
- Repair options

**Speaker:** Professor Malcolm Hollis, Chartered Surveyor and Building Pathologist; Consultant, Professor of Building Pathology at the University of Reading.

## RIBA London Autumn CPD

### CPD Providers' Network Roadshow: Tuesday 21 November, 9.30am-5.30pm

This is a unique opportunity for architects and construction professionals to gain up-to-date knowledge, enhance personal proficiency in a wide range of subjects, and earn CPD points and hours.

Each session is one hour, and you can book as many as six sessions throughout the day.

Attending all day can get you one whole day's worth of valuable CPD. Attendance is free so hurry and book your place!

Below is a list of seminars that have been confirmed; there are many more to come.

- CDM by Total CDM Solutions
- Intergrated Homes by CEDIA
- Galvanising / Finishes by Medway Galvanising Company
- Woodworm infestation and fungal wood decay in buildings by Timberwise UK Ltd
- Why should businesses care about sustainability? (Tiles) by Interface Europe Ltd
- Undercut Anchors for Rainscreen Cladding Panels - (Advance Curtain Wall Technique) by Fischer Fixings UK Ltd
- Underfloor cooling by REHAU
- Underfloor heating by Uponor
- Designing a Catering Facility? An introduction to FCSI by Food Service Consultant Society International
- Party Walls Act by Drivers Jonas
- Planning & Common law by Drivers Jonas
- Waterproof flat roofing by Radmat Building
- 'Wet, Wet, Wet' - Sustainable Drainage Systems by Aggregate
- Powered industrial doors - Health and Safety advancements by Kaba

At 5.45pm Ewan Willars, Head of Policy at the RIBA will give a presentation. This will be an update on the Olympic progress and opportunities. This one-off presentation is only open to delegates who have attended the RIBA London CPD Providers Network Roadshow.

**FEE:** Attendance is free so hurry and book your place.

### RIBA Standard Forms of Appointment and Client Guide to Appointing an Architect: Tuesday 12 December, 2-4.45pm

The new RIBA Standard Appointment Contracts are due to come out in early 2007. Richard Brindley will focus on the forthcoming changes to the Standard Forms of Appointment as well as provide insight on how to convince your clients to use it. Richard will also look at fee guidance and calculation.

**Speaker:** Richard Brindley is a Chartered Architect and Director of Practice at the RIBA. He trained at the Bartlett School of Architecture and practised for many years in the South East. Before taking up his post as Director of Practice two years ago, he was a director in London offices of Llewelyn-Davies and Clague.

### Fire Safety Update: Wednesday 22 November, 2-5pm

The biggest single reform of fire safety legislation in over 30 years, the Regulatory Reform Fire Safety Order, comes into effect this year consolidating 70 separate pieces of legislation. The changes see an end of certification and the Fire Precautions Act.

Under the reforms, responsibility for fire safety will be held by the employers and the 'responsible person' for those premises.

The seminar will cover:

- The likely impact of the legislation on design
- The role of DD9999 - the Code of Practice for Fire Safety in Design, Construction and Use of Buildings
- Risk assessments
- Fire safety management
- Building Regulation changes including domestic sprinklers as a compensatory feature, warehouse compartmentation, fire safety management, sprinkler protection for Residential Care Homes and high rise apartment buildings. What will happen to Local Acts?
- The effect on means of escape for disabled people.

**Speaker:** John Miller FBEng, FRICS has more than 40 years' Building Control Surveying experience in both the public and private sectors. He is Past Chairman of Building Control's National Technical Committee; and a consultant lecturer at Portsmouth University.

### ConstructionSkills seeks professionals for new school coaching scheme

ConstructionSkills (in conjunction with ELBA, the East London Business Alliance) is looking for construction companies to take part in a new coaching scheme which is being developed to demonstrate the wide range of careers opportunities available to young people as a construction professional and ensure there are sufficient numbers of appropriately qualified individuals to meet future recruitment needs.

This voluntary scheme is being piloted at Eastlea Community School in the London Borough of Newham from October 2006 - April 2007. It aims to match construction professionals with pupils in Year 9 so that they can find out about careers in our industry directly and make an informed decision about their future education prior to choosing GCSE options.

After an initial introduction, professionals registering for the scheme will be matched with a pupil in Year 9 for regular monthly coaching sessions after school during which time professionals will be able to explain to pupils what their role involves, talk about projects they are currently working and discuss both the exciting and the challenging aspects of the role.

If you are interested in joining this scheme as a construction professional please contact Janette Welton at the CIC-ConstructionSkills Team, t: 020 7399 7404, e: [jwelton@cic.org.uk](mailto:jwelton@cic.org.uk)

## Context Live 2006 – 10-11 October Olympia, Hammersmith Rd, London W14 8UX



Context is the office interiors exhibition and conference for all those involved with planned or live, design, fit out and refurbishment projects for workspaces. Context 2006 has also relocated to London Olympia and will be part of a wider series of building and property management events at the same venue, further cementing the importance of fit out and workspace design in a building's performance and lifestyle.

The CPD seminar programme will cover topics relating to following issues:

- Creating workspaces: Building regulations (Part L) and Solar Gain, Health & Safety, Sustainability, Noise (Part E), Ventilation (Part F), Fire Safety and Ergonomics
- Office interior products: ergonomics, technology in the workplace, storage & filing management and partitioning

For further information, see: [www.contextlive.co.uk](http://www.contextlive.co.uk)

## SLEEP 06 Exhibition – 7-8 November



SLEEP 06 brings together all those involved in the creation of new hotels: Owners and Operators, Architects and Designers, Investors and Developers. Dedicated to the world of hotel design, and supported by a pan European marketing campaign, SLEEP 06 is a multi-faceted event with leading exhibitors from the world of contract interiors.

SLEEP 06 takes place alongside the European Hotel Design Awards and Conference and this unique format guarantees a top-level audience unmatched by any other event in the sector. Exciting and innovative, SLEEP 06 delivers quality contract interiors solutions in a 2 day event delivering inspiration, celebration and education - all under one roof.

The European Hotel Design Conference offers a unique 2-day format. Day 1 focuses on hotel design and Day 2 sees the emphasis switch to hotel development. Keynote speakers included celebrated designer, Karim Rashid, Go! Airlines founder Barbara Cassani, and Ilse Crawford of Soho House Hotels.

For further information: [www.sleepermagazine.co.uk](http://www.sleepermagazine.co.uk)

## Reasons to visit The Building Centre

The **Information Desk** provides access to information on thousands of building products including 3,500 different product catalogues and brochures from leading and innovative manufacturers, available for free collection.

Our **Building Products Library** serves as a valuable resource when specifying materials for building projects and locating individual products, including technical data, trade names, services and suppliers.

The **Product Exhibition** features exhibits that are regularly updated with new and innovative products. The recently opened **'Eco-Zone' Gallery** features sustainable building materials and products. The gallery will continually highlight manufacturers and products that preserve the natural environment within the built environment.

Our **New Bookshop** offers a wide selection of publications relating to Architecture, Design and Building including construction related contracts, regulations and BSi publications.



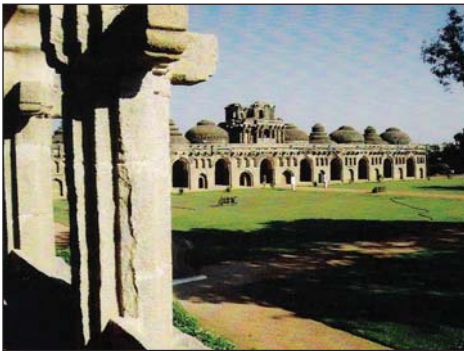
The Building Centre is home to **New London Architecture (NLA)** a permanent exhibition space presenting buildings and projects currently transforming the face and shape of London. A giant model of central London covering 33 London boroughs creates a wider understanding of the importance of architecture. Supported by numerous seminars and temporary themed exhibitions throughout the year.

26 Store Street, London WC1E 7BT Tel: 020 7692 4000  
Open 09.30-18.00 Mon-Fri 10.00-16.00 Saturdays  
[www.buildingcentre.co.uk](http://www.buildingcentre.co.uk)

## Company of Chartered Architects Tours

Buoyed up by the success of the architectural study trip to Chicago, Pittsburgh and Fallingwater, thought is being given to similar tours for the coming year. It is proposed that a longer study trip will be made to Brazil in late July or early August 2007 and another in February 2008 to Southern India.

The trip to Brazil will be kept as cheap as possible given that the country is most of the way around the world. The July time slot is in the southern hemisphere winter and the climate should be agreeable (between 19°C and 25°C in Rio with low rainfall for the month). At this stage we would aim to include Rio and Brasilia and probably one other venue - possibly Salvador or Sao Paolo. This should enable us to look at the colonial heritage as well as the renowned modernist architecture and a smattering, it is suspected, of the local cultural attractions. The trip will probably be of 9-10 days duration and will involve flights between the various centres.



Elephant Stables of the Palace City of Vijayanagara, near modern(ish) Hampi in Karnataka

Mysore, Hampi, Hyderabad, Belur, Halebid, Badami and Bijaipur and other locations in the central / southern sector but that there will be the possibility of add on sectors to enable those wishing to do so to visit Lutyens' Delhi and Chandigarh. The author of the Blue Guide to Southern India who trained both as an architect and an archaeologist has indicated his willingness to guide the group.

In order to facilitate early planning (and, therefore, cheaper fares and hotel costs) the Clerk would be grateful if you could indicate your interest in either or both of these ventures.

Please send any expression of interest to David Cole-Adams, The Clerk, The Company of Chartered Architects, 82A Muswell Hill Road, London N10 3JR, t: 020 8292 4893, e: [wccaclerk@blueyonder.co.uk](mailto:wccaclerk@blueyonder.co.uk)

We are also keen to see a trip to Southern India take place in February 2008 and the travel distance suggests that 9-10 days will, again, be required. It is proposed at this stage that the trip will take in

## CIC London develops a free advice service to Charities

Registered charities in London will be able to get free property and construction consultancy with the launch of a new scheme aimed at encouraging and facilitating corporate social responsibility (CSR) among surveyors, architects, engineers and other property related consultants.

Property Advice for London will provide a match-making service for London based charities to access specialist property expertise from established providers. The scheme, sponsored by Barclays Bank, is being run by the Construction Industry Council London (CIC) and RICS, who will ensure that the charity clients are matched with companies with the right experience, expertise and resources to provide answers to often complex property issues.



Mark van de Berg (above), Chairman of CIC London and Director of Northcroft Construction Consultants, said 'It is interesting to chart the journey of CSR as a business issue. What may once have been perceived as an inconvenient luxury is rapidly becoming an essential business activity and demand for this scheme has been driven by property consultants as much as the potential beneficiaries.

'Charities increasingly recognise how the right property strategy is central to business success and Property Advice for London will provide them with professional property advice and guidance that would otherwise be expensive and difficult to access.'

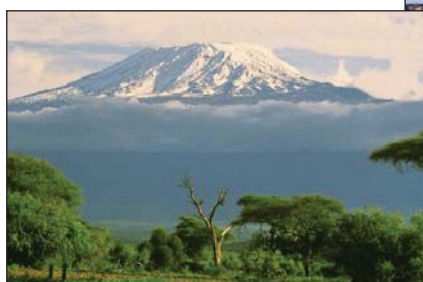
For the opportunity for your company to sign up and become to be one of the service providers of this worthwhile scheme simply download the application form from [www.cic.org.uk](http://www.cic.org.uk) and email through to [propertyadvice@cic.org.uk](mailto:propertyadvice@cic.org.uk)

## Architects Benevolent Society

### Adventure Challenges 2007

Visit [www.absnet.org.uk](http://www.absnet.org.uk) for details of trips to Mt Etna, Kilimanjaro, Morocco and Vietnam. Join other ABS supporters for the challenge of a lifetime, whether trekking or cycling you will have an incredible adventure whilst raising money to care for your less fortunate colleagues. Give it a go!

Contact Norman Webster, Development Manager, ABS, t: 020 7580 2823, e: [norman@absnet.org.uk](mailto:norman@absnet.org.uk)



## DIARY

RIBA London, 66 Portland Place, London W1B 1AD  
Tel 020 7307 3681 [www.architecture.com/ribalondon](http://www.architecture.com/ribalondon) Fax 020 7307 3788

To receive our fortnightly update of news and events, contact [riba.london@inst.riba.org](mailto:riba.london@inst.riba.org)

### October 2006

**EXHIBITION UNTIL 25 NOVEMBER, THE RIBA STIRLING PRIZE** in the Florence Hall, RIBA. An airport, a children's hospital and a private house are among the six buildings which have been shortlisted for The RIBA Stirling Prize in association with the Architects' Journal, the most prestigious and exciting award for architecture. The £20,000 prize is awarded to the British architects of the building that has made the greatest contribution to architecture in the past year. This exhibition offers an opportunity to see the shortlisted schemes, and cast a vote for the scheme you think should win. Votes and comments cast in the exhibition will be recorded on the RIBA website [www.architecture.com](http://www.architecture.com)

**CPD TUE 10, PART L UPDATE**, 2pm- 5pm at the RIBA, 66 Portland Place, London W1B 1AD. The new Approved Documents came into force 6 April 2006. Speaker: Martin-Conlon, JHA Innovation Ltd. Early bird bookings £70.00 inc. VAT + £1 ABS. If booked less than 2 weeks in advance £80.00 inc. VAT + £1 ABS. Contact Regional Office, t: 020 7307 3681 or see: [www.riba.org/fileLibrary/pdf/Newer\\_Part\\_L\\_Booking\\_form.pdf](http://www.riba.org/fileLibrary/pdf/Newer_Part_L_Booking_form.pdf)

**WED 11, RIBA SMALL PRACTICE CONFERENCE** at the RIBA. Sessions will explore how practices can establish value in clients' eyes (with Mukund Patel of the DfES and David Partridge of Argent Group offering a client's perspective), how developing skills and specialisms can add value to projects, and how training and incentives can help build team value. Planners and planning experts will also be explaining how small practices can deliver added value to clients by understanding the planning game. Brochures are available on request from [practice@inst.riba.org](mailto:practice@inst.riba.org)

**SAT 14, AIA UK/LONDON CHAPTER ANNUAL STUDENT DESIGN CHARRETTE** at the Architectural Association, 36 Bedford Square, London WC1B 3ES. This is a one-day juried competition is open to students of architecture in the UK or abroad. This is a really fun as well as a challenging day giving participants a kick-start to the academic year. Entry fee £10 per person. Further details from [chapterexecutive@aiauk.org](mailto:chapterexecutive@aiauk.org)

**WED 18, WEST LONDON ARCHITECTURAL SOCIETY AGM**, 7pm at the Auriol Kensington Rowing Club, 14 Lower Mall, Hammersmith, London W6 9DJ. Contact the Chair, Frances Dorrien-Smith, e: [BigJimSmit@aol.com](mailto:BigJimSmit@aol.com)

**CPD THU 19, JCT CONTRACTS UPDATE**, 2-5pm at the RIBA. The family of JCT Contracts, published last year, has now completely replaced the old 1998 editions. You must not mix and match the new contracts with the old as the old JCT Contracts are being phased out. How have the contracts changed? How is the impact of those changes unfolding? At this seminar, contracts expert Philip Burkill will guide you through the new forms of contract and highlight the significant amendments and how they will affect you. Early bird bookings £70.00 inc. VAT + £1 ABS. If booked less than 2 weeks in advance £80.00 inc. VAT + £1 ABS. Contact Regional

Office, t: 020 7307 3681, e: [riba.london@inst.riba.org](mailto:riba.london@inst.riba.org)

### November 2006

**EXHIBITION 6 NOVEMBER -2 DECEMBER, SUSTAINABLE LIVING BY DESIGN** in Gallery 2, RIBA. This exhibition examines how we live today and takes a look at innovative, inspirational proposals exploring the nature of sustainable living. The thirty-two projects exhibited include work by Ash Sakula Architects, Buschow Henley, Cole Thompson Anders and Studio Bednarski amongst others.

**WED 8 - SUN 12 NOV, INSPIRED ART FAIR (IAF)** at Christ Church, Commercial Street, Spitalfields, London E1. Now in its 4th year IAF is at the forefront of exhibiting the best in contemporary art from emerging independent artists. Building on the success of the last three years, IAF 2006 sees over 40 dynamic national and international artists represented across a diverse range of media. IAF provides an exciting arena for contemporary art and represents an ideal way to discover and invest in talented young artists tipped for a bright future. For more information, see [www.inspiredartfair.com](http://www.inspiredartfair.com)

**CPD TUE 14, DIAGNOSING BUILDING DEFECTS**, 2-5pm at the RIBA. It is essential that all building professionals must have a thorough understanding of building defects. This half-day seminar will make a comprehensive examination of defect diagnosis. Speaker: Professor Malcolm Hollis, Chartered Surveyor and Building Pathologist. Early bird bookings £70.00 inc. VAT + £1 ABS. If booked less than 2 weeks in advance £80.00 inc. VAT + £1 ABS. To book, contact Regional Office, t: 020 7307 3681, or see: [www.riba.org/filelibrary/pdf/diagnosing\\_building\\_defects\\_booking\\_form.pdf](http://www.riba.org/filelibrary/pdf/diagnosing_building_defects_booking_form.pdf)

**CPD TUE 21, CPD PROVIDERS' NETWORK ROADSHOW**, 9.30am-5.30pm at the RIBA, free admission. This is a unique opportunity for architects and construction professionals to gain up-to-date knowledge, enhance personal proficiency in a wide range of subjects, and earn CPD points and hours. Each session is one hour, and you can book as many as six sessions throughout the day. Attending all day can get you one whole day's worth of valuable CPD. See centre pages for details. To book, contact Regional Office, t: 020 7307 3681 or see: [www.riba.org/go/events/regionevent\\_2487.html](http://www.riba.org/go/events/regionevent_2487.html)

**CPD WED 22, FIRE SAFETY UPDATE**, 2-5pm at the RIBA. The biggest single reform of fire safety legislation in over 30 years, the Regulatory Reform Fire Safety Order, comes into effect this year consolidating 70 separate pieces of legislation. Early bird bookings £70.00 inc. VAT + £1 ABS. If booked less than 2 weeks in advance £80.00 inc. VAT + £1 ABS. To book, contact Regional Office, t: 020 7307 3681.

COPY DATE FOR NEXT LONDON ARCHITECT  
1 NOVEMBER 2006  
SEND TO LIZ WALDER, RIBA LONDON  
[liz.walder@inst.riba.org](mailto:liz.walder@inst.riba.org)