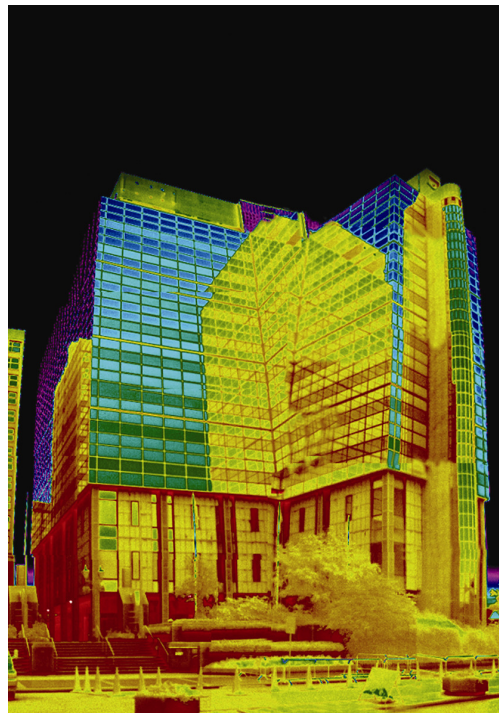


## Energy Assessment Training & Accreditation Launch Events in Liverpool - September 2009

Come along to this free launch event for more information on this new energy assessment training and accreditation programme in association with Stroma Accreditation based in Castleford. This exciting new venture offers a wealth of opportunity for members to generate new clients and new income streams with tailor made training packages within this expanding market. The partnership with Stroma, the CLG approved accreditation body, provides courses for all strands of commercial and residential energy assessment.



### **The potential benefits to architect's of the RIBA Yorkshire Accreditation scheme:**

**Diversity** New skills and knowledge to offer to clients, providing a route into the expanding energy compliance industry. Access to potential new client bases and associated networks.

**Control** By undertaking this kind of training, architects can re-gain control of this part of the building design process. This type of activity is best done by professionals who understand the construction of buildings. Architects are in a unique position to be able to deliver and take ownership of this compliance system.

**Better Design Quality** Integration of energy performance analysis and assessment during the initial stages of design can result in more effective and robust buildings.

**Knowledge** Cross fertilisation of knowledge within the profession will ensure appropriate delivery of energy performance targets in a well considered and informed way.

#### **RIBA North West**

Unit 101  
The Tea Factory  
82 Wood Street  
Liverpool L1 4DQ UK

Tel +44 (0)151 703 0107  
Fax +44 (0)151 703 0108

**Speaker: Stroma**

Stroma Accreditation is approved by the Department for Communities and Local Government (CLG) to train, accredit and manage energy assessors. We provide combined training and accreditation packages for all strands of energy assessment including Code for Sustainable Homes.

Implemented under the Energy Performance of Buildings Directive (EPBD), energy assessment forms an integral part of the drive to improve energy efficiency in the built environment.

The procedure must be carried out by a qualified energy assessor who has undertaken the necessary training, registered with an approved accrediting body and obtained the necessary insurance. Stroma Accreditation guides candidates step-by-step through the process to make becoming an energy assessor straightforward, cost-effective and efficient.

**Schedule:**

- 13.30 Coffee & Registration
- 14.00 Introduction
- 14.10 Presentation
- 15.00 Questions and Answers
- 15:30 Opportunity to speak 1-on-1 with the team

**Venue:** milkandsugar, 82 Wood Street, Liverpool L1 4DQ

**Time:** Tuesday 1 September 2009, 14.00pm – 16.00pm

**Fees:** FREE



-----  
**Please reserve ..... place(s) at the Liverpool venue for Energy Assessment Training launch event.**

Name(s): .....

Organisation: .....

Address: .....

.....

Tel: ..... Email: .....

**Please note:** Send booking form to RIBA Northwest, Unit 101, The Tea Factory, 82 Wood Street, Liverpool L1 4DQ or fax to 0151 703 0108. Please inform RIBA Northwest of any changes on 0151 703 0107. The RIBA reserves the right to substitute speakers or cancel events should exceptional circumstances arise.

**RIBA North West**

Unit 101  
The Tea Factory  
82 Wood Street  
Liverpool L1 4DQ UK

Tel +44 (0)151 703 0107  
Fax +44 (0)151 703 0108

riba.northwest@inst.riba.org