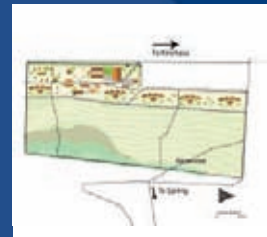


Architecture South

- RIBA South Awards
- RIBA South Conservation Awards
- RIBA South Student Awards
- CPD Seminars and Conferences



Angus McDougall
Oxford Brookes
Leslie Jones Memorial Prize



Colin Tomsett
University of Portsmouth
RIBA Barrington Smith
Travel Award.



Elliott Wingfield
Oxford Brookes
RIBA South Prize

Simon Astridge &
Neal Collins
University of Portsmouth
RIBA South Prize



Ruth Marsh
Oxford Brookes
RIBA Oxford Prize



Sophie Lawson
University of Portsmouth
RIBA Hampshire Prize

RIBA South – Chairman’s View The Best in Architecture



Last month was taken up with handing out awards for recognition of outstanding design in architecture – lifts the spirits when there is so much doom and gloom around! The RIBA South Award winners and the Downland Prize winners are all on show here and demonstrate a very high standard yet again.

What I think is impressive is that they are not “fashion conscious buildings” – they are well considered pieces of architecture, which look good today, but these are buildings we will all be proud of in years to come. This is true for the small and large-scale projects alike and of course for the old buildings, where skilful conservation has given new life. To me there is nothing more inspiring and stimulating for an architect than to visit a building where clarity of thought has been carried throughout the design of the building from its concept through

to its detailing. Symm – the sponsors of the RIBA Awards Presentation – have a poignant strap line in their brochure, “When we build, let us think that we build forever” a sentiment shared by all architects!

An exhibition of the RIBA South Award winners is on show in the RIBA South’s new offices. This and the Downland Prize winners will tour the branches and I am hoping that these exhibitions will be held in Local Authority offices where they can show a clear message of what good design is all about and will act as an attraction to encourage architects within each of the branches to come together for a lunchtime forum or evening meeting. Please look out for these and I hope to see you there.

*Robin Hadow
Chairman, RIBA South*

RIBA at the Party Conference:

The RIBA successfully took place in the round of party conferences. There were three fringe debates at each conference, co-hosted an Urban Hub reception with CABE, the Work Foundation, Core Cities and the Centre for Cities as well as setting up many one-to-one meetings with relevant ministers, shadow ministers and other key stakeholders. All the events had good turn-outs with many local members filling seats too.

Please follow the link below to the Party Conference section of [architecture.com](http://www.architecture.com) for more information on the events. Next year the Labour Party will be in Brighton, the Conservatives will be in Manchester and the Lib Dems will be in Bournemouth. We are very keen to maximise local member involvement in the party conferences.

Please see: <http://www.architecture.com/TheRIBA/WhatTheRIBADoes/PublicAffairs/RIBAAtPartyConferences2007/RIBAAtPartyConferences.aspx>

Door opening for council housebuilding clients

Will councils finally make a return as social housing clients next year? The Labour Party’s housing working group seems increasingly confident that they will, following a letter from housing minister Caroline Flint that accepts the argument that well-performing councils should be able to apply for a social housing grant whether or not it is done through the vehicle of an arms-length management organisation (ALMO).

Labour campaigners are heralding this as the ‘fourth way’ they have been demanding ever since the government decided that housing grant should be available to councils only for stock transfers, ALMOS or PFI.

The CLG has since supported this view by saying it expects councils to start applying for a grant in 2009 – that is, borrowing against their assets, just as ALMOs are expected to. The volume of work that emerges, of course, will be up to the enthusiasm, or otherwise, of local authorities.

Flint’s four-point turn seems to be driven primarily by the government’s overriding desire to meet social housing targets in the face of the continuing credit crunch.

The crunch continues to emerge as a force majeure as far as affordable housing policies go. In the North East, house builders led by Persimmon and Barratt have just succeeded in their legal challenge against the 30% affordable homes policy of Blyth Valley Borough Council. Upholding their appeal against the council the judge said that housing in the area was already ‘cheap as chips’.

In London, Hammersmith and Fulham has already put Boris Johnson’s new flexibility on affordable housing (basically, leave it to the boroughs) to the test by approving a revised scheme for 179 homes and a health centre with no social housing element – the original, pre-Johnson proposal had included 50% affordable housing. Observers are waiting to see if Johnson will step in, or let the borough get away with it.

du Boulay CONTRACTS

*Commercial Refurbishment Contractors for
Restaurants, Retail and the Licensed Trade*



Major Clients:

*Bellamy’s of Bruton Place, Brindisa, Café Rouge,
Caffè Italia, Caprice Holdings, Capital Pub Co,
Fuller Smith & Turner, Gourmet Burger Kitchen, Hibiscus,
LaDuree, Paul UK, Ping Pong, PizzaExpress, Ponti’s,
Raffles Nightclub, Strada, Village du Pain, Wagamama...*

Just completed

The first restaurant in Jamie Oliver’s new concept...

Jamie’s Italian
22-26 George St
Oxford

Photographer: David Toney

email: office@duboulay.co.uk Web: www.duboulay.co.uk
Tel: 020 8877 0266



PHOTOGRAPHY



DENNIS GILBERT
07973 75 75 11
dennisgilbert.com

GODDARD CONSULTING
CDM Co-ordinators
Health and Safety Consultants

www.goddardconsulting.co.uk

Goddard Consulting are a specialist firm offering CDM Co-ordination and Health and Safety Consultancy services. We focus on providing pragmatic advice to our Clients in relation to their duties under the CDM Regulations 2007.

Goddard Consulting have acted as Planning Supervisors / CDM Co-ordinators on over 1,700 projects. We have worked on sites such as Heathrow’s Terminal 5, Canary Wharf, The Gherkin and occupied government buildings where planning, coordination and regard to Health and Safety are of paramount importance.

Goddard Consulting are currently the CDM Co-ordinators for the 1000 room Park Plaza Hotel in Westminster (inset).

Additional Services include: Site Inspections, H&S Policies, Risk Assessments & other consultancy services.

Crest House • 102-104 Church Rd • Teddington • Middlesex • TW11 8PY
T 0845 5555 500 F 0845 5555 501 E info@goddardconsulting.co.uk

RIBA South Awards Presentation Evening

The awards presentation evening was held in the National Film and Television School, Beaconsfield on Tuesday, 14 October 2008. Award winners and their guests celebrated the RIBA Award Winners in the South region, RIBA South Conservation Awards and Student Awards from both Oxford Brookes University and the University of Portsmouth. The evening began with a champagne reception accompanied by a harpist playing harmoniously in the background. Many of the guests also enjoyed a building tour of the National Film and Television School given by Glenn Howells Architects. Thereafter the guests were ushered into the theatre for the awards presentations.

After the welcome speech given by Robin Haddow, Chairman, RIBA South, Nik Powell, Director, National Film and Television School gave an animated talk about the development and success of the National Film & Television School followed by a film that highlighted some of the renowned alumni that had passed through their doors.

Ruth Reed, RIBA President Elect, followed with a view to the future exploring the challenges that the profession face with the downturn in the economy and how the RIBA can help its members.

Ruth's uplifting address was followed

by Robert Franklin, Chair, RIBA South Conservation Group, who spoke of the importance of conservation in architecture and the formation of the conservation awards and conservation group within the South Region. Thereafter he presented awards to Woodfield Brady Architects, for Rowstock Barn, David Grindley Architects, for Headington Baptist Church and Haworth Tompkins, for the North Wall Performing Arts Centre, St Edwards School. Commendations were then presented to: Brownhill Hayward Brown Chartered Architects, for The Crown Inn and Hess Kincaid Leach, for Radcliff Road.

RIBA South Awards Chair, Nicholas Hare, Nicholas Hare Architects LLP then delivered an insightful overview of the awards process bringing to life all the shortlisted buildings that the judges had visited over a very busy two days. Thereafter he highlighted the huge contribution made by members and staff that provides the right ingredients to make the awards process a success. Nicholas then announced the following winners of the RIBA Awards: Rogers Stirk Harbour & Partners, for Oxley Park, Glenn Howells Architects, for National Film and Television School, Hampshire County Council Architecture & Design Services, for Winchester Discovery Centre,

Hampshire County Council Architecture & Design Services, for Pinewood Infant School, Julian Harrap Architects, for The Listed Wind Tunnels, Belsize Architects, for University College Boathouse, Design Engine Architects, for University Centre, Winchester University and Haworth Tompkins, for North Wall Arts Centre.

The evening was by no means at an end as recognition was then given to student award winners. Charles Webster and Mark Shipton, Oxford Architects presented awards to students from Oxford Brookes University. Three prizes were given as follows: RIBA Oxford Prize, awarded to Ruth Marsh, Leslie Jones Memorial Prize, awarded to Angus McDougall and the RIBA South Prize, awarded to Elliott Wingfield.

Shortly afterwards Andrew Hoare, Lacey Hickie Caley awarded the winners from the University of Portsmouth. The following awards were presented: RIBA South Prize, awarded jointly to: Simon Astridge and Neal Collins, RIBA Hampshire Prize, awarded to Sophie Lawson and the RIBA Barrington Smith Travel Award, awarded to Colin Tomsett.

The evening was an excellent opportunity to meet with fellow architects, clients and other members of the construction industry. The evening was sponsored by Symm & Co.



Nicholas Hare, Charles Webster & Mark Swenarton



Before Award Presentations



Michael Carden, MBE & Bob Franklin



Nick Powell



Robin Haddow



Symm & Co

Conservation Award Winners



Rowstock Barn
Allan Woodfield
Woodfield Brady Architects



Headington Baptist Church
Robert Grindley
David Grindley Architects



North Wall Performing Arts Centre
Joanna Sutherland
Haworth Tompkins



Crown Inn
Andrew Hayward
Brownhill Hayward Brown
Chartered Architect.



39 Radcliffe Road
Paul Leach
Hess Kincaid Leach.

RIBA Award Winners



University College Boathouse
Shahriar Nasser
Belsize Architects



Oxley Park
Andrew Partridge
Rogers Stirk Harbour & Partners



University Centre
Keith Evans
Design Engine Architects



National Film and Television School
Helen Newman
Glenn Howells Architects



North Wall Arts Centre
Steve Tompkins/ Joanna Sutherland
Haworth Tompkins



The Listed Wind Tunnels
Julian Harrap / Judy Allen / Sean Buck
Julian Harrap Architects



Winchester Discovery Centre
Hampshire County Council
Alec Gillies
Architecture & Design Services



Pinewood Infant School
Liam Presley
Hampshire County Council Architecture & Design Services

Student Awards

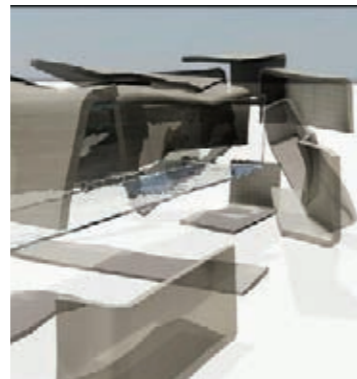
Oxford Brookes Student Awards



Elliott Wingfield
RIBA South Prize

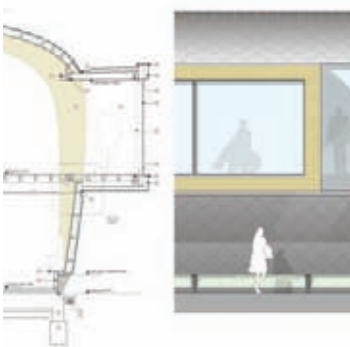


Ruth Marsh
RIBA Oxford Prize



Angus Mc Dougall
RIBA Oxford Prize
Leslie Jones Memorial Prize

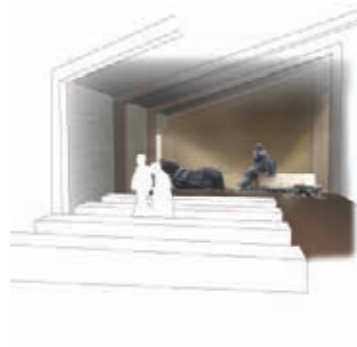
University of Portsmouth Student Awards



Sophie Lawson
RIBA Hampshire Prize



Colin Tomsett
RIBA Barrington Smith Travel Award



Neil Collins & Simon Astridge
RIBA South Prize

Colin Tomsett – University of Portsmouth RIBA Barrington Smith Travel Award

Colin Tomsett describes below details of his project:

As part of his dissertation he wrote about the work of Engineering Ministries International (eMi). eMi is a non-profit Christian charity consisting of architects, engineers and other design professionals who donate their skills. Their aim is to help the poorest around the world step out of poverty and into a world of hope. Over the past 25 years they have worked on over 700 projects. These projects have included designs for schools, churches, hospitals, orphanages, roads, bridges, clean water projects and many more essentials to those in great need. Colin had the



privilege of gaining a six month internship with eMi last year and was heavily involved in the design of a training and summer camp based in Angola. He found this a great learning curve, working alongside 11 team members representing various countries and cultures. Whilst looking into the Angolan culture and lifestyle they were able to find a way to integrate this into a design that would be of benefit to them.

He hopes to compare and contrast this with another project trip in September 2008 (possibly the Elikia Village Project, Congo; a self sustaining village for widows and orphans). Colin is eager to learn more about a new culture, local construction techniques and further his studies into climatic design. He feels it would not only be of benefit to him but also the people he will be serving; providing them with facilities to help improve their lifestyle and basic living.

Further information on Engineering Ministries International www.emiworld.org

If you could

get timber frame structural wall panels, roof trusses, roof cassettes, "Frame Web" floor joist systems and Glulam structures from the same company...

...of course you wood, woodn't you?

Working with a range of HQI approved house types or an innovative bespoke design service, we assure quality, delivery and cost, coupled with reductions in build time, resource and risk. MMC provides optimum use of sustainable materials.

FRAME UK
Putting timber in the frame

Frame UK Jenson House,
Cardrew Industrial Estate, Redruth,
Cornwall TR15 1SS
01209 310560 www.frameuk.com

Julian Church & Associates Ltd

Julian Church and Associates Ltd's philosophy is to provide clients with a high quality service whilst adapting a proactive approach. By understanding client focused business goals, we provide a valued quality product to the exact requirements of the client.

Construction Consultation

Quantity Surveyors

Project Managers

T: 01903 533770
F: 01903 537104
W: www.jca-ltd.co.uk
E: office@jca-ltd.co.uk
12 Bath Place, Worthing, West Sussex BN11 3BA

the Rooflight Company
The Innovators in Rooflighting

neo

INNOVATION IN ROOFLIGHTING

Tel: 01993 833108
www.therooflightcompany.co.uk

Would you like the latest news from RIBA South?

We currently only have email addresses for 80% of our members. Please email Sarah.Briginshaw@inst.riba.org so we can ensure you receive our CPD Calendar and monthly e-bulletins. We aim to send you no more than one email per week.

Special Interest Group Planning Group



Philip Waddy
Chair South Region
Planning Group

Should Architects be sceptical when the Government announce they are going to "simplify the planning system?"

From the significant response received by the South Region Planning Group to the call for members experience of the new '1 APP' planning application procedure it would seem that far from a smoother, more streamlined process promised by Government, the new on-line forms

have proved a good deal more cumbersome and time consuming for most. Not only that but the variation in administration of the system by different Local Planning Authorities is remarkable. Perhaps the system is still bedding down.

Another topic for the forthcoming seminar is the new General Permitted Development Order designed to remove the need to apply for planning permission for certain domestic operations. The Government thinks this will reduce the number of householder applications by up to 30,000 per annum thus reducing the demands on overstretched Planning Authorities and

releasing valuable planning resources to improve performance elsewhere. I'm afraid, as with so many such initiatives, there will be unintended consequences. Already some LPAs have announced that they will not give free advice as to whether domestic operations fall within the GPDO, inviting householders instead to apply for a Certificate of Lawfulness. Essentially, a different form of application procedure. So complex is the new GPDO (do read it but don't expect to understand it) that time spent by an Architect evaluating whether a particular proposal falls within the limits set will, at average hourly rates, cost considerably more than the statutory fee for making a formal application. Thus, in my opinion, I cannot see the new GPDO reducing workloads significantly primarily because it is far too complex.

More worrying however is the prospect that with the Government predicting up to a 20% reduction in the numbers of householder applications plus a similar but real reduction in average numbers of planning applications presently being submitted due to the current downturn, the bean counters in local government will be seeking to reduce their staffing levels on both counts. Conclusion: an improved service from your Local Planning Authority is as remote now as it has ever been.

Conservation Group



Robert Franklin
Chair of RIBA South
Conservation Group

Two preoccupations have exercised the group in recent months; the ongoing radical re-thinking of heritage protection, and the Regional Conservation Awards.

Our response to the Draft Heritage Protection Bill was submitted to HQ, and seems to have joined the many others that expressed concern about funding and quality of administration of otherwise admirable provisions. Our thanks to Michael Carden, MBE for this; we now need to support it with input on how the primary legislation will be implemented.

At the last Group meeting, held at the EH Reading office, which I was unfortunately unable to attend, constructive discussion was had with the EH officers who attended, and we now look forward to influencing the Planning Policy Statement that will replace PPG 15, and which should form the basis of our next meeting in November/December when we need to begin serious scrutiny of the numerous documents that will inform the PPS, in order to minimise the crippling self-contradictions present in PPG 15.

Our Conservation Awards, and the RIBA Regional Category Awards, that were presented at the new National Film and Television School (itself an RIBA Category Award winner) in Beaconsfield, was an excellent and well attended event, and

Symm & Co's continuing enthusiastic sponsorship in these tough times is especially welcome.

This year's Southern Region Conservation Award category was 'New Building in an Historic Setting', and it brought out some excellent work. Rather like teaching, where 30 students can come up with an astonishing array of solutions to the same brief on the same site, one is always amazed at how many creative and beautiful ways there are to solve a design problem. I was particularly taken by the North Wall Performing Arts Centre at St Edward's School, Oxford, having watched it rising out of the ground with extreme clarity of purpose and simplicity of means, all reflected in an astonishingly low Contract Sum. Our thanks to the judges, Michael Carden, MBE, John Bucknall and Rob Parkinson, themselves all expert architects and conservationists.

The category next year is 'Pure and Expert Repair', so out with the drawings, photos and descriptions of devoted repairs and ingenious structural solutions to church, cathedral, town hall and private house or cottage, that all of you involved in this crucial but modest and 'invisible' side of our work, have done recently. Of all the expert work carried out by architects, this one is the most overlooked, yet it is arguably one of the most important as it requires such a depth of history and construction knowledge, and creative construction solutions, in order to keep our treasured built heritage in good health. This category will also help us towards a better recognition of this work at 66 Portland Place, where it sometimes seems to be dismissed as not containing 'Design'. Nothing could be further from the truth!

Davuka GRP Ltd

The #1 source for architectural mouldings

Tel: 020 8660 2854
Fax: 020 8645 2556
email: info@davuka.co.uk
www.davuka.co.uk

HEATED TOWEL RAILS AND FEATURE RADIATORS IN 100% STAINLESS STEEL

Electric, central heating and dual fuel options available on all models.

25 year guarantee

Polished and brushed satin finishes.

Contact: J. I. S.
+44 (0)1444 831200
info@jiseurope.co.uk

JIS Europe Ltd

www.thecoastalrange.co.uk

BULMER BRICK CUTTING

The Brickfields Heddingham Road Nr. Sudbury Suffolk. CO10 7EP

T 01787 269 132
F 01787 269 044
E info@brickcutters.com

Fully bonded arch lintels, Rubbed & Gauged Archwork, Hand Cutting & Brick Carving.

Cut & Bonded Special Shapes, Refacing.

WWW.BRICKCUTTERS.COM
BRICK MASONS AND ARCH SPECIALISTS

NEOS 360 INTRODUCES 'ALL AROUND' OUTDOOR ELECTRONIC GAMES

NEOS 360 is a brand new addition to Playworld Systems' NEOS outdoor electronic gaming range designed to bring the excitement of NEOS to playground projects with smaller budgets.

It also adds a different dimension to the range, creating a 'play arena' with its robust circular structure and introducing a variety of new games.

As the name suggests, players stand in the middle of a 10 foot diameter circular space frame structure made from powder coated steel on which eight electronic light buttons and the control pod scoreboard are mounted, so that play wraps all the way around.

There are sixteen game variations in total, eight one-player games and eight two-player games fostering cooperation and team building alongside healthy competition. The NEOS range has been praised for moving play into the 21st century appealing to the 'gaming' generation. It is for the heart and lungs not just the thumbs encouraging youngsters to get active, improving memory retention, hand-eye coordination, physical strength and endurance as well as social interaction.

Further information available from Playworld Systems on 01531 636010 info@playworldsystem.co.uk

QED STRUCTURES
Consulting, Structural & Civil Engineers

-QED Structures is a modern innovative design based consultancy who believe in providing a personal and holistic approach to all projects.

We are a forward thinking and practical practice who like to get involved at the very initial concept and/or site acquisition stage to help architects and developers expand their ideas whilst also advising on the most suitable form of construction. We pride ourselves on being open to new challenges and have the ability to create and develop an excellent working relationship with the whole design team.

QED Structures understand the importance of sustainability and the ecological aspects of a project and therefore ensure that this is a priority during the development of a project. We have demonstrated our ability to provide established designs and details on a range of challenging projects. This combined with the personal holistic approach and proven "added value" service we provide to clients, architects, developers and the whole design team, demonstrates the commitment and essence of QED Structures.

www.qedstructures.co.uk
Contact: Mr. Ian Waddingham
Tel: 01273 666856 / 07817 787265

STONE AGE
Natural Stone Flooring
Respoke Masonry Service
Project Management & Installation

Introducing **Mahogany**

Newly discovered and exclusive to Stone Age, the richly coloured Mahogany limestone creates a truly outstanding impact with its fine-grain and unusual pattern.

For more information on this and other stones supplied by Stone Age, contact:
020 7384 9090
or visit www.estone.co.uk

TBKS
Architectural Ironmongery

Established for more than 25 years, our Bath based family business offers one of the widest ranges of traditional and contemporary architectural ironmongery nationwide.

If you are involved in renovation, quality build or heritage work our catalogue and service will be of great benefit to you.

To get a copy of our specifiers catalogue, call us or order one online

2 Ashmans Yard, Bath, BA15 3EH
01225 462090 - sales@tbks.co.uk
www.tbks.co.uk

REHAU
Unlimited Polymer Solutions

ENERGY EFFICIENCY AT ITS BEST: REHAU WINS LARGEST EVER CONTRACT FOR GROUND - AIR HEAT EXCHANGER SYSTEM

Renewable energy specialist REHAU has been awarded the largest ever contract for its award winning AWADUKT Thermo ground - air heat exchanger system.

The installation to provide a renewable source of controlled ventilation will take place shortly at the new Queen Elizabeth's School in Wimborne, Dorset, which is being built as part of the DIES Building Schools for the Future (BSF) One School Pathfinder programme.

Dorset County Council has secured additional funding for the school to become a Demonstration Project for Sustainable Schools and the AWADUKT Thermo system, which will deliver substantial energy savings on both heating and cooling, has been specified in line with that. Its performance will be data-logged by the school and the ongoing savings analysed into the future.

Around 3,500m of REHAU's 250mm diameter polypropylene pipework will shortly be installed in grids 1.5m below ground underneath three of the school's blocks and will use the natural temperature of the ground at that depth to pre-heat or pre-cool ventilation air before it is delivered into the school.

To advertise your products or service in the next issue
call the RIBA Sales Team on 0161 236 2782

CPD

EST/RIBA Energy Efficient Refurbishment Event

28 January 2009, Green Park, Reading

This half day seminar will:

- show the requirements for energy efficiency within the wider context of refurbishment to planning and building regulations
- provide you with up to date policy guidance, and clarify where requirements do and do not apply
- provide you with practical case studies and tools for evaluating refurbishment projects
- offer information on a range of tools suitable for evaluating the scope for refurbishment and financial assistance available.

Speakers:

Gina Yuzbasioglu // BRE Housing

Gina is currently a senior consultant at BRE, who specialises as a technical author and project manager on the Energy Saving Trust's Best Practice in Housing Programme.

James Honour RIBA // Senior Consultant, Housing Futures, BRE

James is a Chartered Architect with 8 years experience in private practice, joining the BRE in 1992. He has managed to production of EST publications, presented at Self-Build shows, provided ad-hoc presentations and has represented the EST on various committees, such as the Energy Efficiency Partnership for Homes and an English Heritage publications review panel.

Who should attend?

Architects, designers and housing professionals involved in refurbishment who are interested in maximising the potential for energy efficiency within their projects or finding out their obligations under the regulatory system.

Programme:

Each course will run from 1.00pm - 4.30pm (registration from 12.30pm onwards) and includes complementary lunch.

To book your place at this event please contact Caroline Cotton at caroline.cotton@inst.riba.org.uk or on 0118 987 4900.

Busy ASBA Network looking to grow

ASBA (Association of Self Build Architects) is very busy at the Grand Design and HomeBuilding and Renovating Shows in London, Birmingham and Glasgow.

ASBA's marketing network of Chartered Architects seek further membership of Architects throughout the UK to meet enquiries from domestic clients of all types, from homeowners to property developers. Each year the effect of the many Shows and our national exposure in magazines means that there is a requirement to ever expand the spread of Architects in all regions in order for them to take up these enquiries.

ASBA is a non-profit making company run solely to generate business for RIBA registered practices who are embroiled in the design of houses, conversions and extensions and who, as a member, would be solely responsible for one area of the country.

Through a new look and discerning housing market, ASBA welcomes new members.

For further information please contact: Info@asba-architects.org

CPD Speaker Speaks out

Tom Taylor is a popular speaker at RIBA events. RIBA South asked Tom to explain some background, current views and possible courses:

Tom is a highly experienced project management practitioner on a wide variety of projects. He is a joint founder of Buro Four - an eminent PM outfit, where he is a retained consultant. He is a principal of dashdot. Tom is a past Chairman and current Vice President of APM. He brings enthusiasm, knowledge and good humour to his roles as Project Manager, Consultant, Lecturer, Speaker, Broadcaster and Author.

Tom is a design friendly Project Manager and he sympathises with the pressures and predicaments of Architects on their projects. Consequently his half day talks tackle themes such as "Architects and Project Management", "Monitoring Progress and Managing Time on Projects" and most recently "The Expanding Design Team" - so that Architects can demonstrate their essential involvements and contributions to the definition, selection and management of the core and wider design team - as well as good design itself. Such capabilities and interest may reduce possible marginalisation of Architects and architecture.

Regrettably and significantly the economic situation in the UK has changed - directly and indirectly affecting the UK construction industry and its participants. By coincidence in early 2008 he started providing talks on "A Recession Survival Kit for small and medium consultancies" - to those who were aware and interested - including Architects! The kit presentation has been well received, remains topical and, as his other courses, it attempts to provide practical solutions which can be implemented over following days and weeks.

Overall he finds the mix of attendees at the RIBA CPD events to be impressive and stimulating - young and experienced; private, public and third sector involvements; small to large practices; all with fluctuating ratios of design to management time involvements by the project, stage, week, even day.

As a PM practitioner he needs to keep his own competencies up to date; and consequently believes the RIBA CPD provisions are pertinent, effective and well administered for Architects.

Green Ideas for School Design Conference

Wednesday 17 September 2008

On 17 September a full day conference was held at the Everest Community College, a school near Basingstoke which was completed just one year ago. The conference 'Green Ideas for School Designs' focused on recognising the need for quality design in schools, from conception to the reality of the buildings in use.

We had a full house with clients, architects, contractors and planners attending. The conference was chaired by Isabel Carmona, Chair, RIBA South Green Group, and there were six presentations. The first of these was given by Keith Grainger, Principal of Garth Hill School, whose talk entitled "One Head teacher's Perspective on Designing a New School" described the client's experience in creating a realistic vision of their sustainability aspirations. The second presentation was by Andy Pritchard from Hampshire County Council, the Architects of the Everest Community College, whose talk covered the scheme from inception to finish.

After the break, Craig Anders of Cole Thompson Anders provided the insight on the "Class of the Future" which was followed by Nick Mirchandani and Peter Hazzard presenting a joint effort on 'Luton Academies and their Carbon Footprint' and disentangling some of the technical hurdles (Carbon calculator) designers have to go through at the moment. After lunch, Roderic Bunn of BSRIA gave an animated presentation on 'What a Carbon-neutral School Should Look Like' - a reality check on buildings in use that may not achieve all the green aspirations.

The final presentation was by Adrian Leaman, The Usable Building Trust on 'Sustainable Schools, Fiction or Reality?' presenting information on the users reactions to some of the buildings presented by Roderic.

After a lively question and answer session most of the delegates went on a tour of the college and shortly afterwards left with the general consensus that they had attended an excellent conference in content and presentation. Several people remarked that it was one of the best conferences they had ever attended.



Six winners of the Downland Prize for Architects 2008

Two new sponsors, for Individual House and Sustainability awards

The six winners of the Downland Prize for Architects 2008 were honoured at a reception held at the RIBA on Monday 13 October. The winners were selected from the 62 entries which were submitted by architects in the South and South East of England.

The Downland Prize is awarded to architects who are based in the South or South East RIBA Regions, for projects anywhere in the UK of under £1million total cost. The Prize celebrates the added value that an architect can bring to a relatively small project.

Run by RIBA South East and RIBA South since 1998, this year the Downland Prize has two new sponsors. In addition to Ibstock Brick Ltd, which has sponsored the Prize since its inception, the Management Recruitment Group sponsors the Individual House award; and The Rooflight Company sponsors the Sustainability award.

The winners of the Downland Prize 2008

- **Overall Winner; and Winner, Individual House award:** Barry Mullin, Westerham, Kent working for The Manser Practice Private House, Isle of Wight
- **Winner, Sustainability award:** Paul Edwards, Clague, Ashford, Kent Linear House, Highgate, London N6
- **Winner, Private Leisure:** Guy Hollaway, CTM Architects LLP, Hythe, Kent Extension to rural house near Sellindge, Kent
- **Winner, Residential:** Corin Rae, Riach Architects, Oxford 197-199 Iffley Road, Oxford
- **Winner, Restoration:** Tim Holmes, Dunnell Robertson Partnership Ltd, St Peter Port, Guernsey Les Buttes Barn, St Saviour, Guernsey
- **Winner, Small Project:** Linda Hallsworth, Saville Jones Architects, Worthing Extension to house in Somerset Road, Ferring.

Shortlisted houses

Projects shortlisted for the Downland Prize and included on the website and in the exhibition include:



Overall Winner: Seaglass House

This exciting new house is approached by a tree-shrouded drive off a nondescript road. The first sight of the house is of the sinuous, curved mosaic wall – an oblique reference to the seaside location and the beautiful views beyond. The house's gradual opening-up to those views; and the intelligent installation of sustainable features are deeply satisfying.

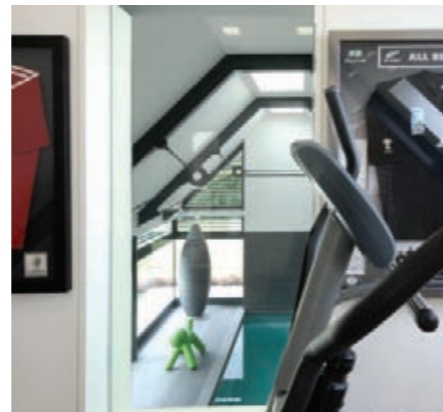
[Photo: Morley Von Sternburg]



Sustainability Winner - Linear House, Highgate, London N6

The first impression of the house is of its invisibility: it is cut into the site and the flat, earth-covered roof resembles a flower meadow. Environmental considerations were a high priority in the design; and the whole is a clever, low-profile solution on an extremely sensitive site.

[Photo: James Winspear]



Private Leisure Winner - Extension to rural house near Sellindge, Kent

Situated in a beautiful, tranquil location in the Kent countryside, the project involved the creation of a bespoke extension to transform a traditional rural detached house in contemporary style. Careful design enabled the architects to win planning consent for a 150 per cent extension to the existing building.

[Photo: Mike Waterman]

Downland Prize 2008 was sponsored by: Ibstock Brick, the Management Recruitment Group and The Rooflight Company.

Both winning and shortlisted projects – 19 in all – can be seen on the Downland Prize website www.architecture.com/ribasoutheast/downland and in an exhibition which is available to tour the south east.

- Upgrading a tired, dated 1970s economy house in Milton Keynes
- Highly sustainable new house on a brownfield site in Brighton
- Subterranean private swimming pool with green roof in Sittingbourne
- Halving the carbon footprint of a Queen Anne House in Bosham
- Restoring a Chinese-style 19th century house in Winchester to its former glory.



Small Project Winner - extension to house in Somerset Road, Ferring

This is an amazing transformation of an ordinary, mundane bungalow that has real wow factor. The space flows comfortably from inside to outside, into a well-designed garden. The detailing and workmanship of the thin, overhanging zinc roof is particularly fine. A really worthy winner.

[Photo: Haydn C Jones]



Residential Winner: 197-199 Iffley Road, Oxford
Set on a rather unimpressive street, the property appears like any other Victorian façade. However, set at the back of the premises is an outstanding example of what an architect can achieve. Close attention to detail adds to the clever blending of old with new, in complete harmony.

[Photo: Riach Architects]



Restoration Winner - Les Buttes Barn, St Saviour, Guernsey

Both client and architect worked closely together to create a restoration of a piece of Guernsey history. The building now provides versatile accommodation that combines a strong sense of innate history, with an exciting contemporary feel.

[Photo: Karl Taylor]

RIBA response to Pre-Budget Report Statement and launch of the Killian Pretty Review of Planning Applications

The Chancellor of the Exchequer, the Rt. Hon Alistair Darling MP, delivered his 2008 Pre-Budget Statement to the House of Commons today. Among the key points of interest to RIBA members are:

Taxation

- VAT to be cut from 17.5 per cent to 15 per cent for one year from Monday 1st December
- A permanent extension of the £120 rebate to £145 for basic-rate taxpayers through a rise in the personal tax allowance
- Introduction of a new 45% tax rate for those earning more than £150,000 a year, to be introduced in 2011 after the next general election. From April 2011 there will also be a 0.5% rise in all rates of NI contributions.
- Tax exemption on foreign dividends for large businesses to prevent an exodus from Britain
- An exemption from empty property rates for properties with a rateable value of less than £15,000- exempting an estimated 70 per cent of empty properties

Helping small businesses

- Small businesses to get more time to pay tax - HMRC will allow firms to spread their corporation tax, VAT, PAYE, income tax bills and national insurance contributions over a schedule they can afford through the new HMRC Business Payment Support Service.
- An extension of a Government scheme to guarantee loans to small businesses – £1bn provided for a temporary Small Business Finance Scheme

- A delay on a planned one per cent corporation tax rise on the profits of small businesses
- Businesses allowed to offset losses of up to £50,000 against profits made in the last three years, temporarily extending the carry-back of losses from one to three years

Investment in public buildings, housing and infrastructure

- £3billion package of public capital expenditure to be brought forward from 2010-11 to 2009-10, focusing on the Building Schools for the Future programme, transport and social housing
- An announcement of £1.8billion extra funding for new social homes and regeneration schemes
- An expanded programme of insulation to improve the energy efficiency of Britain's housing stock
- Flood relief spending brought forward to benefit 27,000 homes

The RIBA has compiled Resources for Members and Practices in Challenging Times that provides access to expert guidance & consultancy, practical business advice for the small and large practitioner and national and international market leads. This resource will be regularly updated with new information.

We will be publishing Resources for Members and Practices in Challenging Times in the coming days within the Members-only area at www.architecture.com. If you would like to access the information sooner, please e-mail us at marketing@inst.riba.org

Tree House Study Centre

The South East England Development Agency has provided a grant to help part fund the Countryside Education Trust's new Tree House Study Centre, which is a ground breaking sustainable building situated in the New Forest. The building was officially opened on the 25th September by Alan Titchmarsh.

The Centre used innovative sustainable design techniques which incorporates photo voltaic panels for lighting the office, a bespoke rain water harvesting system and biomass boilers as well as using as much locally sourced materials as possible. The Centre provides educational activities for local children and those from deprived schools to learn about the countryside and the environment with the aim of opening up the use to the community once fully operational.

For further information please contact David Bridges, Director of the Countryside Education Trust on 01590 612401 or www.cet.org.uk



Oxley Woods wins the Manser meda

Oxley Woods by Rogers Stirk Harbour + Partners has won the Manser Medal for Houses and Housing, sponsored by The Rooflight Company.

The announcement was made on 11 October 2008 at a special awards ceremony for the RIBA Stirling Prize in association with The Architects' Journal at the BT Arena and Convention Centre in Liverpool. The winner was announced by Michael Manser CBE and a cheque for £5,000 presented by Val King of the Rooflight Company.

The Manser Medal is awarded for the best one-off house designed by an architect in the UK. All the RIBA Award-winning houses and housing schemes in the UK were considered for this year's Manser Medal and five were shortlisted.

For more information go to: <http://www.architecture.com/NewsAndPress/News/AwardsNews/Press/2008/OxleyWoodsWinsTheManserMedal.aspx>



[Photographer: Richard Bryant]

RIBA South new office

RIBA South Regional Office has now moved!

After several postponed moving days, the RIBA South regional office moved location at the beginning of September 2008 to the London Road campus of Reading University, just outside Reading town centre.

We are now feeling very much at home in our beautiful new surroundings! The London Road campus is an oasis of calm but just a few minutes from the bustling town centre of Reading.

Do come and visit us in our new office!

The new office address is: Room G01, Building L019, University of Reading, London Road, Reading RG1 5AQ

Our new telephone number is 0118 987 4900, fax number is 0118 931 4493, our email addresses stay the same.

For location details please go to: www.reading.ac.uk/above/find/about-findindex.asp



RIBA SOUTH NEW STARTERS

Sarah Briginshaw joins RIBA South as Part Time Regional Administrator

Welcome to Sarah Briginshaw who joined the RIBA South team as Part Time Regional Administrator in September 2008. Sarah, who lives locally, has a construction background having worked in support services for large consultancy and contracting organisations.



Caroline Cotton joins RIBA South as CPD Events Co-ordinator

Welcome to Caroline Cotton who joins the RIBA South team as CPD Events Co-ordinator. Caroline has an event management and marketing background in the corporate and not - for - profit sectors. She will be organising the region's CPD events.



GARDESA
SECURITY DOORS FOR ALL LOCATIONS
TIMBER FACED STEEL DOORS
WITH MULTIPOINT LOCKING
HIGH SECURITY SPECIFICATION
TESTED TO UNI ENV 1627 - 1630
EX STOCK OR MADE TO MEASURE
GARDESA DOORS
WWW.HIGHSECURITYDOOR.COM
Tel. 020 8650 8855
Fax. 020 8650 4061
Email: gardesadoors@btinternet.com

Architectural Fabrications from concept to completion.

- One off prototype to production roll out.
- Quality fabrications in mild steel, aluminium & stainless steel.
- Finished to your specification.

Contact:
alan@psjfabrications.com
Tel No: 01234 268484
www.psjfabrications.com

gary gabriel associates
consulting structural & civil engineers
Sevenoaks Taunton Sherborne London

To advertise your products or service in the next issue call the RIBA Sales Team on 0161 236 2782

RIBA CPD Network Launches in 2009

RIBA South is to launch an exciting new initiative in 2009 with the inaugural RIBA CPD South, West and Wales Network. The four participating RIBA nations and regions; Wessex, South West, South, and the Royal Society of Architects in Wales (RSAW) are working together to provide a flexible, beneficial, high quality, low cost CPD programme for our members across four central locations.

The Network programme is designed to make it easy for you to cover the RIBA CPD Core Curriculum in one single booking when signing in for the complete series of seminars throughout 2009. The season ticket is convenient and exceptional value.

There are nine different seminars in the Network programme including subjects in all five RIBA CPD Core

Curriculum areas and the compulsory Health & Safety element. Each seminar is repeated across the four areas, allowing flexibility to attend in a different location if necessary. The Network programme will be supplemented by other CPD seminars in all the usual venues across our region.

All members will receive a booklet and booking information in late November early December, and can benefit from reduced cost CPD by signing up to the entire series throughout 2009, which will satisfy 27 hours of your 35 hour commitment.

Please contact the regional office on 0118 987 4900 to discuss the Network, and keep an eye out for the full programme which will be with you shortly.

RIBA South are providing the following CPD & Conferences during 2009:

25 Mar Reading ● 2-5pm	Architecture and Project Management Speaker: Tom Daylor, dashdot
29 April Reading ● 2-5pm	DDA / Inclusive Access Speaker: Keith Bright
14 May Reading ● 2-5pm	Whole Life Costing Speaker: Owen Griffiths
2 June Reading ● 2-5pm	CDM Regulations Speaker: Alan Russell, BYL Ltd
24 June Reading ● 2-5pm	Legislation Update / Construction Law Speaker: John P Miller
22 July Reading ● 2-5pm	Running a Small Practice
30 Sept Reading ● 2-5pm	Code for Sustainable Homes Speaker: Nick Tune of BRE
21 Oct Reading ● 2-5pm	Party Wall & the Architect Speaker: David Reynolds of Drivers Jonas LLD
25 Nov Reading ● 2-5pm	Building Conservation

Those CPD Seminars marked with ● are included in the Regional CPD South, West & Wales Network.

If you would like to book a place in the South region

contact **RIBA South**
0118 987 4900
caroline.cotton@inst.riba.org

Booking forms are available on www.architecture.org/ribasouth under Continuing Professional Development

RIBA South,
ROOM G01, Building L019
University of Reading
London Road, Reading
Berkshire RG1 5AQ

For more information on these CPD seminars and events please visit www.architecture.com/ribasouth and look at the Continuing Professional Development section under CPD Courses. You can download a booking form by clicking on the course name.