

Diary

■ Exhibition ■ Talk ■ Event

The RIBA President's Medals Student Awards

Until 21 January

Arabia Felix – the architecture of the Yemen

Until 9 February

Emerging Architecture

Until 1 March

Taketo Shimohigoshi/AAE + FAM Arquitectura y Urbanismo

31 January 18.30

Ecosistema Urbano Architects + Unsangdong Architects

5 February 18.30

Architects In Practice: The Photographs of Tim Soar

5–27 February

Salma Samar Damluji

9 February 11.00

Royal Gold Medal Lecture 2008 Edward Cullinan

13 February 18.30

FAR frohn&rojas + Studio Tamassociati

19 February 18.30

Back to the Future: Sir Basil Spence

22 February–8 April

Chris Bosse + Anagram Architects

26 February 18.30

Satish Kumar with Tony Juniper

4 March 18.30

Cesare Peeren and Andreas Lang

5 March 18.30

Surviving the Suburb: The Climate Machine

5 March–26 April

Built Ecologies: Translating Landscape Into Architecture

12 March–19 April

Mark Lynas

18 March 18.30

Ton Matton in conversation with Christopher Dell

19 March 18.30

Mathis Wackernagel and Sue Riddlestone

26 March 18.30

Visualisations of the 21st Century City

16–29 April

Hermann Scheer

22 April 18.30

Culinary Event Ton Matton

25 April 18.30

Family Workshop Ton Matton

26 April 10.30

RIBA  Trust

Spring 2008

Edward Cullinan

Architecture and Climate Change

Emerging Architecture

Ton Matton

Basil Spence

RIBA  Trust

Royal Institute of British Architects
66 Portland Place
London W1B 1AD
T 020 7580 5533
F 020 7255 1541

www.architecture.com

Cover: Ted Cullinan doing what he does
© Simon Feneley

Bulletin

International Dialogues: Architecture and Climate Change In partnership with One Planet Living®

This Spring the major international programme of talks and symposia on climate change and the role of the built environment continues with leading visionary thinkers, practitioners and policy-makers from disciplines such as environmentalism, architecture, urbanism and art. This series invites contributors to consider and debate the possibilities and critical agendas in the global efforts to mitigate and adapt to climate change: focusing on issues of globalisation and the socio-economic, cultural and environmental role that cities and our urban landscape must embrace to enable the transformation towards a low carbon world.

Curated by Tamara Horbacka, RIBA Trust

Generously sponsored by



In partnership with



In association with

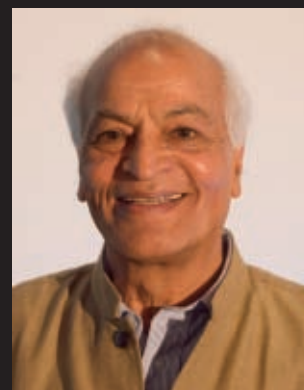


Exhibitions

Free admission. If planning a visit on a Saturday or late weekday afternoon, it is advisable to call 020 7307 3888 before your visit.

Talks

Unless otherwise stated, tickets cost £8 (£5 concession). To book download a ticket booking form from www.architecture.com. You can also leave a message on our recorded booking line 020 7307 3699 or purchase tickets from the RIBA Bookshop, 66 Portland Place.



Satish Kumar with Tony Juniper Architecture and Freedom

Talk Tuesday 4 March
18.30 Jarvis Hall

Satish Kumar eminent peace campaigner, editor of *Resurgence* magazine and founder and Director of Programmes of the Schumacher College International Centre for Ecological Studies will discuss his visions for the 21st century and the role of architecture in helping to create more ecologically responsible societies.

Satish Kumar teaches, lectures and runs workshops internationally on reverential ecology, holistic education and voluntary simplicity. In November 2001, Satish Kumar was presented with the Jannalal Bajaj International Award for Promoting Gandhian Values.

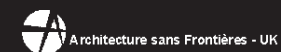
Tony Juniper, Executive Director of Friends of the Earth, will be joining Satish Kumar to respond and discuss the issues raised in his lecture.

Cesare Peeren and Andreas Lang From Recyclicity to Superuse

Talk Wednesday 5 March
18.30 Jarvis Hall

In 1997 Cesare Peeren founded 2012 Architects with Jan Jongert, a network of architects who consider 'reuse' to be an integral design strategy. They believe that the intrinsic qualities of used materials and location offer a potential added value if they are incorporated into new products and compositions. In this joint talk, architect Andreas Lang from the art/architecture collective, public works, will address questions of how users of public space are engaging with their environment and how design and programmatic strategies can support and facilitate physical, economical and social infrastructures in the public realm, both in urban and rural settings.

In association with



Above from top: Satish Kumar;
Tony Juniper. Right: Folk Float by public
works, commissioned by Grizedale Arts
in Egremont, Cumbria

International Dialogues: Architecture and Climate Change

Mark Lynas

Talk Tuesday 18 March
18.30 Jarvis Hall

Acclaimed author and broadcaster, Mark Lynas, will discuss the dramatic impacts of climate change around the world, following his latest book, *Six Degrees: Our Future on a Hotter Planet* (2007), which shows degree by degree – what is likely to happen to different places this century as global warming accelerates. In his previous ground-breaking book, *Hide Tide: News from a Warming World* (2005), he revealed the first evidence from around the globe – of how global warming is hitting people's lives, not in the future, but in our world today.

Mark Lynas writes regularly for *The Guardian*, *The Independent* and has a fortnightly column in the *New Statesman*. He was selected as one of US science journal *Seed Magazine's* 'Revolutionary Minds' in 2004 and in 2006 was selected by *National Geographic* as one of its Emerging Explorers.

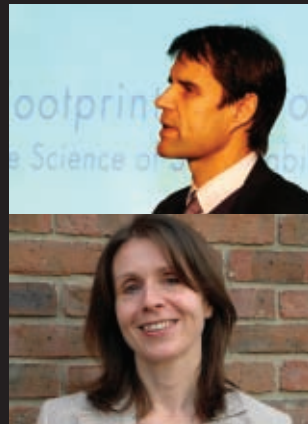
Above from top: Mathis Wackernagel;
Sue Riddlestone

Mathis Wackernagel and Sue Riddlestone Slow Things First

Talk Wednesday 26 March
18.30 Jarvis Hall

In this joint talk, Mathis Wackernagel, Executive Director, Global Footprint Network, will discuss how the ways we shape and rebuild our cities will make or break our future. Will we be able to develop cities that allow us all to live well, within the means of our only planet and how can we future-proof them for this? Sue Riddlestone, Executive Director of BioRegional and a London Sustainable Development Commissioner, will introduce the One Planet Living design approach and how it is being applied to projects including the Sustainability Strategy for the London 2012 Olympics, Paralympics and Legacy: 'Towards a One Planet 2012' launched in November 2007. She will review achievements so far and the challenges ahead.

Mathis Wackernagel co-created the Ecological Footprint concept during his doctoral thesis at the University of British Columbia, Vancouver, Canada and has worked on sustainability issues for organisations internationally. He has authored many articles, reports and books including *Our Ecological Footprint: Reducing Human Impact on the Earth*, *Sharing Nature's Interest*, and WWF International's *Living Planet Reports*. He received an honorary doctorate from the University of



Berne in 2007, a 2007 Skoll Award for Social Entrepreneurship, a 2006 WWF Award for Conservation Merit, and the 2005 Herman Daly Award of the US Society for Ecological Economics.

Sue Riddlestone co-founded BioRegional, an organisation which develops practical solutions for sustainability and has co-authored *BioRegional Solutions* with co-founder Pooran Desai about their projects and approach. She is also a co-founding director of 'One Planet Living' a global initiative developed by BioRegional and WWF, which is leading on the development of exemplary One Planet Living communities and projects in the UK and around the world. A member of the London Sustainable Development Commission, she has worked on setting targets for reducing London's CO₂ emissions and is working on the sustainability strategy for the 2012 Olympics.



Hermann Scheer Towards Energy Autonomy

Talk Tuesday 22 April
18.30 Jarvis Hall

The 21st Century has to integrate many economic and social complexities: labour and living, ecology and economy, technology and culture, to avoid a lifestyle potentially harmful to the environment. Architecture and urban planning are key factors in achieving this task with integration of renewable energies – decentralised, emission-free production, supply and use – as a central challenge and huge opportunity for creating an ecological future.

Dr Hermann Scheer is President of EUROSOLAR; Chairman of the World Council for Renewable Energy (WCORE); President of the International Parliamentary Forum on Renewable Energies; Member of the German Bundestag and acclaimed author. He received the Solar World Prize 1998; the Right Livelihood Award in 1999; the World Prize on Bioenergy 2000 and the World Wind Energy Award 2004.



Ton Matton Surviving the Suburb: The Climate Machine

Exhibition 5 March–26 April
Florence Hall

This installation explores the urban dwelling of the future. Described as 'an optimistic research machine', it presents possibilities for day-to-day city life transformed by climate change and continuing globalisation. The elements exhibited include adaptations of familiar domestic objects like a 'shiitake' kitchen sink with a mushroom bed beneath, or other more speculative 'white goods' of the future such as an urban chicken house. It is not climate change itself but how society reacts to it that is researched here: what effect will it have on how we live, on our urban structures and domestic space?

Ton Matton describes his practice as situated 'somewhere between object-design, society-shape, ecological city planning and artist-activism' exploring 'the small Utopias and interruptions of daily life' and 'connections between traditional countryside living and contemporary mega-citylifestyle'.

He founded MattonOffice in 2000 in Rotterdam as what he called a 'free range office' based in a mobile, self sufficient shed. Since 2001 he has been based in Germany (together with partner, the writer Ellie Smolenaars) in the former GDR village-school of Wendorf between Hamburg and Berlin.

Matton has previously worked on projects with Atelier van Lieshout,

MVRDV, Rem Koolhaas/OMA (Rotterdam), feld72 (Wien) and Raumlabor (Berlin) amongst others. He has participated in Archilab (Orléans), Biennale Sao Paulo; Manifesta 2 (Ljubljana) and the Architekturbienale (Rotterdam).

Ton Matton in Conversation with Christopher Dell

Event Wednesday 19 March
18.30 Florence Hall

An evening of discussion and performance. Christopher Dell is a German philosopher and musician. He plays the jazz vibraphone.

Culinary Closing Event

Event Friday 25 April
18.30–23.00 Florence Hall

An evening of conversation, cooking and singing with Ton Matton and guests.

Family Workshop

Event Saturday 26 April
10.30–12.30 Florence Hall

All events are free but booking is essential as numbers are limited.



Supported by the Embassy of the Kingdom of the Netherlands and IFG Ulm

Above from left: Hermann Scheer;
Urban Chicken House ©Rafal Wamka;
Ton Matton ©Rafal Wamka

Emerging Architecture

The Architectural Review Awards for Emerging Architecture, which recognise excellence in built or manufactured projects by architects under 45, are celebrated this Spring with a series of talks by winning and commended architects.

Taketo Shimohigoshi/ AAE + FAM Arquitectura y Urbanismo

Talk Thursday 31 January
18.30 Wren Room

Taketo Shimohigoshi will be talking about architecture in central Tokyo, considering its architectural landscape and the relationships between architecture and the overcrowded image of the city. He will talk about his ideas, using some of his projects by way of example.

The 11 March Memorial for the victims of the Madrid terrorist attacks was inaugurated opposite Atocha train station in Madrid on 11 March 2007, on the third anniversary of those attacks. FAM Arquitectura y Urbanismo will talk about their design for the memorial, exploring the thought processes behind it, and the new construction methods they used to create it.

Ecosistema Urbano Arquitectos + Unsangdong Architects Cooperation

Talk Tuesday 5 February
18.30 Wren Room

Ecosistema Urbano Architects will talk about their Eco-boulevard of Vallecas which they define as a process of 'urban recycling'. Self sufficient 'air trees' provide temporary public, social and recreational spaces. Once the new suburban area and its vegetation have developed to the extent that there is no longer a need for these air conditioned environments, they are easily dismantled, leaving spaces that resemble forest clearings.

Unsangdong principals Yoon Gyoo Jang and Chang Hoon Shin are both acutely aware of and responsive to the growing globalisation of architecture. Their new gallery is an assured piece of urban sculpture that clearly reflects wider international influences and brings a sense of verve to Seoul's tatty cityscape.

FAR frohn&rojas + Studio Tamassociati

Talk Tuesday 19 February
18.30 Wren Room

Founded in 2004, FAR frohn&rojas is a networked practice operating between Germany, Chile and Mexico. Looking at their 'Wall House' and placing it within the context of their other work, Marc Frohn discusses his approach of obsessively playing with the 'deep structures' underlying architecture, such as legal constraints, technological and ecological frameworks.

Studio Tamassociati is committed to policies that strengthen conditions of security and integration and that favour democratic growth, social justice and environmental sustainability. They will talk about their winning project, the Prayer and Meditation Pavilion, in Khartoum, Sudan and the ideas that shape the way in which they work.

Chris Bosse + Anagram Architects

Talk Tuesday 26 February
18.30 Wren Room

The work of Sydney based, German architect Chris Bosse is generated from the computational study of organic structures and resulting spatial conceptions. He pushes the boundaries of structure and architecture by means of digital and experimental form-finding. With PTW architects in Sydney, he was a concept architect of the Watercube in Beijing.

Anagram Architects was founded in 2001 in New Delhi. This young practice works across a wide range, from modest residences to large public infrastructure facilities. They will discuss some of their most recent projects, including the offices of the South Asian Human Rights Documentation Centre in New Delhi, where they attempt to combine their own modernist practices with the aim of creating new experiences.



Clockwise from top left: Khartoum, Studio Tamassociati ©Marcello Bonifanti; National Aquatics Centre, Beijing ©Chris Bosse/PTW Architects; Ecoboulevard, Madrid, Ecosistema Urbano Arquitectos ©Emilio P. Doiztua; Memorial, Madrid ©FAM Arquitectos
Main image: Exhibition Installation, Berlin ©Magma Architecture

Emerging Architecture

Exhibition Until 1 March

Florence Hall

Work by young architects from the annual Architectural Review Awards. Now in its ninth year, it has become the leading awards programme for architects and designers under 45, regularly attracting over 500 entries from around the world. An immense diversity of projects, covering areas such as buildings, interiors, product design, engineering structures, urbanism and landscape provide a fascinating snapshot of architecture's emerging generation.

House, Chiba, Sou Fujimoto Architects ©Edmund Sumner/VIEW

The RIBA President's Medals Student Awards In association with Atkins

Exhibition Until 21 January

Gallery 2

Award-winning student work, including the Bronze Medal for Part 1, the Silver Medal for Part 2 students and the Dissertation Medal, selected from over 100 Schools of Architecture. These awards are aimed at promoting excellence in the study of architecture, rewarding talent, and encouraging architectural debate world-wide.

The RIBA President's Medals Student Awards in association with Atkins are also supported by iGuzzini, Paul Davis and Partners, SOM Foundation and Komfort Workspace.

All nominated projects and exhibition touring schedule can be viewed online at www.presidentsmedals.com

Arabia Felix – the architecture of the Yemen

Exhibition Until 9 February

Gallery 1

Celebrating the spectacular architecture of Yemen, this exhibition explores a unique building design culture and the fabric and environment of Yemeni towns which are increasingly under threat from commercial construction and corporate urban development.

Supported by

WORDS&ARCH

Salma Samar Damluji

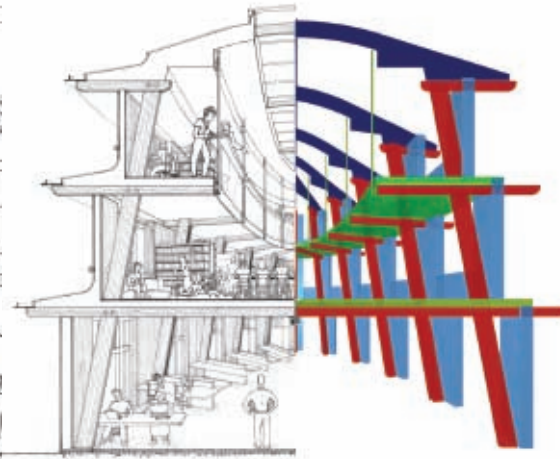
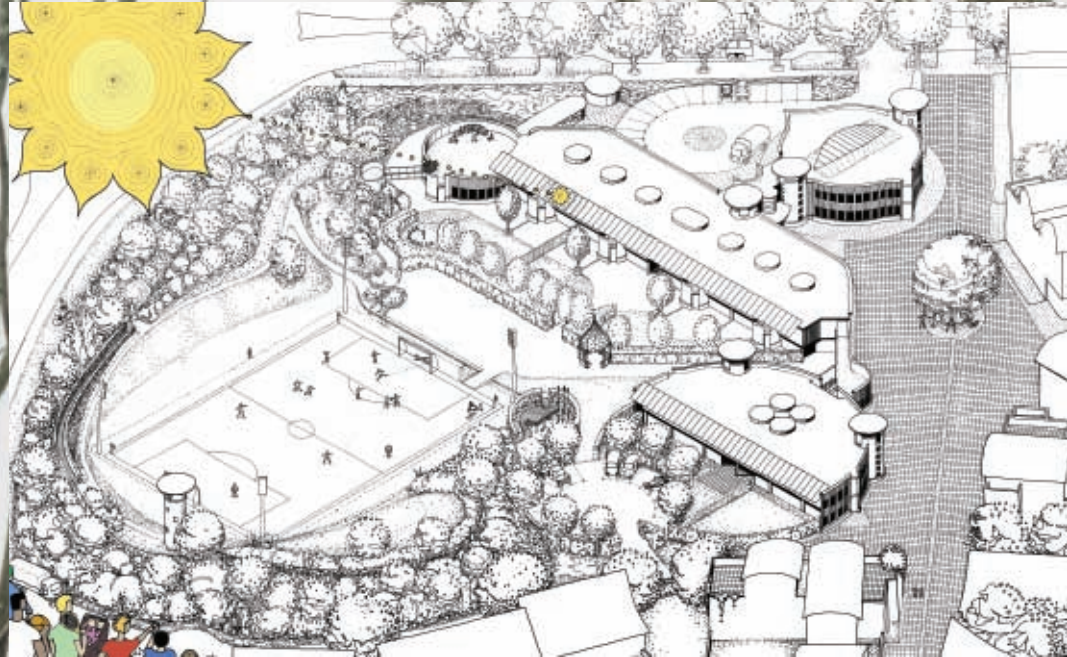
Talk Saturday 9 February

11.00–12.00 Gallery 1

A personal tour around the exhibition Arabia Felix by its Curator, explaining the design and context of the architecture and buildings on display.



Carved wooden screen from the Ba Shrahil House in Shihir, Hadramut (Yemen)
© Salma Samar Damluji



Royal Gold Medal Lecture 2008 Edward Cullinan: 50 Years Practising

Talk Wednesday 13 February
18.30 Jarvis Hall

The 2008 Royal Gold Medal will be presented to Edward Cullinan on 12 February in recognition of his outstanding and ongoing contribution to architecture.

The Royal Gold Medal is approved personally by Her Majesty the Queen and is given annually to a person or group of people whose influence on architecture has had a truly international effect.

Edward Cullinan will present the Gold Medal lecture in which he will cover the period of his life as a practising architect, from the 1950s until today. 'It will touch on what was going on in the world during each decade as well as what I was doing; and it might even touch aspects of the thirties and mid-forties, which I can remember.'

Tickets are £12 each (£10 concessions).

To attend the ceremony and dinner on 12 February please book tickets by email: events@instriba.org

Main image: The Downland Gridshell in winter, 1996–2002
©Richard Learoyd. Above left: Axonometric drawing of Greenwich Millennium School and Health Centre, 1998–2000. Above: Inhabited Elements ©Edward Cullinan



Architects In Practice: The Photographs of Tim Soar

Exhibition 5–27 February
Gallery 2

This exhibition offers a portrait of over 100 of the UK's leading architects and architecture practices.

Through photographs of architects in their working environments, alongside examples of their work, this exhibition offers a fascinating snapshot of the profession in the UK today. The practices include: Allies and Morrison; AHMM; Burd Haward; Edward Cullinan Architects; Eric Parry Architects; Pringle Brandon and Rogers Stirk Harbour + Partners.

The photographic display brings together works from the series; In Practice (*The Architects' Journal*), 40 Under 40 (Corus/AJ winners) and recent portraits in *OnOffice* magazine.

Sponsored by Kirkstone

Burd Haward Architects ©Tim Soar



Built Ecologies: Translating Landscape Into Architecture

Exhibition 12 March–19 April
Gallery 2

Award winning, Sussex-based architects, BBM Sustainable Design demonstrate how local, natural resources can be transformed into well designed, affordable buildings with this exhibition celebrating ten years of their architectural practice.

Using a mix of working models, plans and samples of construction materials, the exhibition demonstrates how modern techniques and technologies can be applied to minimally processed, locally sourced materials to create fresh, tactile, contemporary buildings.

Dyke Road Avenue, Hove, BBM ©Lee Simpson



Visualisations of the 21st Century City

Exhibition 16–29 April
Gallery 1

Over the next 20 years it is likely that many towns and cities will undergo considerable change, as will the technologies, social climates and environmental conditions that influence their forms. This exhibition aims to create visual representations of this dialogue between the built environment and emerging pressures, and how this will affect and develop our surroundings within a 20-year time frame.

An annual exhibition produced by Building Futures in collaboration with MA Design students. This year Students from the Royal College of Art will be responding to the shifting scenarios that the city may face in the future.



**Back to the Future:
Sir Basil Spence (1907–76)
Celebration of a Modern Architect**

Exhibition 22 February–8 April
Gallery 1

This exhibition celebrates the centenary of the birth of Sir Basil Spence, charting the career of one of the most important British architects of the Post-War Era. It focusses on his most important buildings and projects: such as the Sea and Ships Pavilion at the 1951 Festival of Britain and the iconic Coventry Cathedral (1956–62), more controversial works including high-rise housing he designed at Hutchesontown in the Gorbals, Glasgow (1965, demolished 1993) as well as other key projects like the British Embassy in Rome (1971).

The exhibition is organised, devised and curated by the Royal Commission on the Ancient and Historical Monuments of Scotland (RCAHMS) and the National Galleries of Scotland, and draws largely on the Sir Basil Spence Archive held at RCAHMS.

Preliminary sketch for Sea and Ships Pavilion at the Festival of Britain, South Bank, London, by Basil Spence, 1949 ©RCAHMS (Sir Basil Spence Archive)



Basil

V&A + RIBA Architecture Partnership



The Holiness of Beauty: GF Bodley (1827–1907) and his circle

Exhibition at the V&A
Until 17 February 2008
V&A+RIBA Architecture Gallery
(Room 128a)

To mark the 100th anniversary of the death of the most influential Gothic Revival architect of the late 19th century, this exhibition explores Bodley's career from his early days as an avant-garde High Victorian, through his pioneering return of the Gothic Revival to English, late-medieval models to the spare elegance of his late style, which so profoundly shaped the appearance of Anglican churches throughout the world.

His decade-long collaboration with William Morris, partnership with Thomas Garner and influence on his pupils from CR Ashbee to Ninian Comper, are illuminated by drawings, many never exhibited before, supplemented by paintings, textiles, plate and stained glass.

Curated by Michael Hall, who is completing a monograph on Bodley & Garner, and Fiona Orsini, RIBA Trust. Supported by Watts of Westminster, the firm of house and church decorators founded by Bodley, Garner and George Gilbert Scott Jr in 1874.

Supported by Watts of Westminster

GF Bodley and the House Beautiful Michael Hall

Talk at the V&A
Friday 11 January
19.00 V&A Lecture Theatre

Booking required
Tickets: £750, concessions available, from the V&A Booking Office, 020 7942 2211 or visit www.vam.ac.uk/Fridayevenings

Above: Assistants in Bodley and Garner's office in Gray's Inn, London, photographed by Parker, 1883 © RIBA Library Photographs Collections

Architecture Talks at the V&A

All talks 13.00–14.00.
Meet at the Meeting Point at the Grand Entrance, V&A at 12.55.
Free and drop-in, but numbers are limited.

Tuesday 22 January
We are all much in the same boat: Bodley and his contemporaries' challenge to revive Gothic in the later nineteenth century
Dr Paul Snell, RIBA Trust

Tuesday 19 February
Apertures, Volumes & Light: Architecture and Transparency
Abraham Thomas, V&A

Tuesday 11 March
Meet at V&A+RIBA Architecture Gallery (Room 128a), V&A
Going to the Movies: The architecture of the cinema
Fiona Orsini, RIBA Trust

Architecture Now: Up on the Roof

Exhibition at the V&A
Until 1 June

'London's most underused asset is just above our heads'
The Mayor of London,
Living Roofs Report, 2006

This display looks at how roof spaces can adapt in the face of climate change, and an ever expanding population, to become more energy efficient and even power and space generating. Presenting several international projects that look at issues such as green roofs and solar suburbs.

Curated by Emilie Harrak, RIBA Trust.



Unseen Hands: 100 Years of Structural Engineering

Exhibition at the V&A
17 March–7 September
V&A+RIBA Architecture Gallery
(Room 128a)

To mark the centenary of the founding of the Institution of Structural Engineers (IStructE), this exhibition celebrates the importance of engineering in creating some of the most iconic buildings of the past 100 years.

Using three themes (towers, bridges and large enclosures) to find a pathway through a wealth of structural achievement, the exhibition brings to life the design and construction of edifices including New York's Empire State Building, Switzerland's Salginatobel Bridge and Poland's People's Hall – as well as more modern projects including the Millau Viaduct, the Eden Project and the still-rising Burj Dubai.

Through a dramatic variety of media – models, drawings, CAD imagery, video and photographs sourced from all over the world – the ambition and ingenuity of these structures is revealed. Developments in material, form and technique are also explored.

The exhibition is curated by architectural writer David Littlefield with the support of the IStructE.

Unseen Hands: 100 years of Structural Engineering David Littlefield

Talk at V&A
Tuesday 8 April
13.00

Free but numbers are limited
Meet in the Architecture
Education Gallery, Room 128A

Further gallery talks by structural engineers will accompany this exhibition. For further information visit www.vam.ac.uk

RIBA Trust

The RIBA Trust manages the cultural assets of the Royal Institute of British Architects, founded in 1834 for 'the advancement of architecture'. It is the UK's national architecture centre, with an internationally recognised collection of four million books, periodicals, drawings, photographs, models and other archives in the British Architectural Library.

The Trust also delivers the RIBA Awards; RIBA Stirling Prize; the Royal Gold Medal for Architecture; International and Honorary Fellowships; Architecture Week (with Arts Council England and the Architecture Centre Network); talks by architects and non-architects; a full programme of exhibitions; the RIBA International Book Awards (with RIBA Bookshops); education programmes; and the RIBA International Conference.

The RIBA Trust is based at

RIBA's headquarters:
66 Portland Place London W1B 1AD
T 020 7580 5533 F 020 7255 1541
Tube: Great Portland Street, Oxford Circus, Regent's Park. Bus: C2, 88, 453

The Victoria and Albert Museum:
Victoria and Albert Museum,
Cromwell Road London SW7 2RL
T 020 7942 2000 www.vam.ac.uk

The RIBA Trust is a registered charity (Charity number: 110228)

Web: www.architecture.com

At the RIBA:

Gallery

Open Mon–Sat 10.00–17.00 except Tue 10.00–21.00. Free. If planning a visit on a Saturday or late weekday afternoon, it is advisable to call 020 7307 3888 before your visit.

British Architectural Library

Open Tue 10.00–20.00, Wed–Fri 10.00–17.00 Sat 10.00–13.30.
Admission £10 for day ticket, £7 concs, £3.50 Tue eve & Sat. Free to members.

Information Centre

Answers wide range of enquiries about architecture, the RIBA and the British Architectural Library. Public Information Line: 0906 302 0400 (50p per minute in UK), Member Information Line: 020 7307 3600 (free to members).
E info@intriba.org

Education Resources

Education visits and online facilities for HE/FE and secondary school groups T 020 7307 3711.

Photographs Collection

RIBA Photographs Collection can be viewed by appointment Tue–Fri 10.00–17.00. T 020 7307 3642
E photo@intriba.org or see a selection online at www.ribapix.com.

RIBA Bookshop

Covering architecture, design, landscape, construction and contracts. Open Mon–Fri 09.30–17.30 (Tue open to 18.30) Sat 10.00–17.00.
T 020 7256 7222
www.ribabookshops.com

RIBA Bar, Café and Restaurant

Morning coffee, lunch or tea in a spectacular Art Deco setting. Bar open Mon–Fri 08.00–19.00. Café and restaurant Mon–Fri 08.00–18.00 Sat 09.00–17.00. (Occasionally closed for events.)

At the V&A:

The V&A+RIBA Architecture Partnership works to promote a greater understanding and enjoyment of architecture.

Architecture Galleries

Survey of over 2,500 years of architecture through the combined collections of the RIBA and the V&A. Open daily 10.00–17.45. Last Fri of the month 10.00–22.00 Free.
www.vam.ac.uk/architecture

Study Rooms

Drawings and archives from the V&A and RIBA collections. Open Tue–Sat 10.00–17.00. Free. Please call ahead on 020 7307 3708 to confirm availability of material.

Education Programme

Learning resources for HE/FE and schools. T 0207 942 2803.

Design: www.duffydesign.com

Later in 2008

Le Corbusier – The Art of Architecture

Exhibition in Liverpool
2 October 2008–18 January 2009

Le Corbusier was a seminal figure in the architecture of the 20th Century. In 2008 the RIBA Trust will present a major retrospective of his life and work. Curated by Vitra Design Museum and supported in the UK by the Liverpool Culture Company as part of 2008 European Capital of Culture. The exhibition will premiere in one of the most distinctive and dramatic spaces in Britain – the Crypt of the Liverpool Metropolitan Cathedral of Christ the King, designed by Sir Edwin Lutyens – and will then travel in 2009 to the Barbican Art Gallery, London, to mark the 175th anniversary of the RIBA.

Image © FLC/ADAGR Paris and DACS, London 2008



The Trust would like to thank the following companies and organisations, whose investment enables us to bring you the very best in architectural awards, exhibitions, talks, educational programmes and other events throughout the year.

SOM Foundation



THE ARCHITECTURAL REVIEW

gleeds

iQuzzini

WATTS

Foster and Partners

PAUL DAVIS & PARTNERS ARCHITECTS

ATKINS

