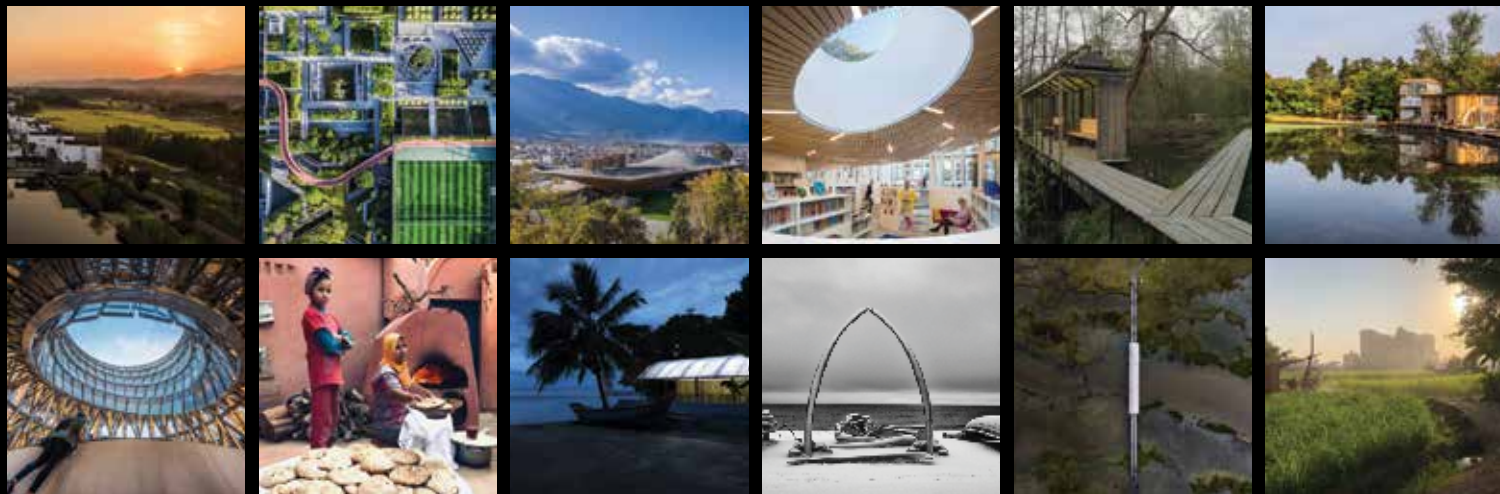




The Royal Institute of British Architects is a global professional membership body driving excellence in architecture. We serve our members and society in order to deliver better buildings and places, stronger communities and a sustainable environment. Being inclusive, ethical, environmentally aware and collaborative underpins all that we do.

www.architecture.com



JANUARY 2022

SUNDAY	MONDAY	TUESDAY	WEDNESDAY	THURSDAY	FRIDAY	SATURDAY
						1
2	3	4	5	6	7	8
9	10	11	12	13	14	15
16	17	18	19	20	21	22
23	24	25	26	27	28	29
30	31					



This project tackles a current social issue within the urbanization process in China – the increasing urban-rural disparity. In Dongziguan, a Village in Fuyang Hanzhou, most of the farmers still live in the aged housings of disrepair. The local government decided to fund an exemplary affordable housing project with the aim of improving the farmers' living conditions.

Concentrating on keeping the farmers' living habits, the architects' intention was to organize the buildings in the vernacular style of the courtyard typology, a traditional local morphology. The design can then be developed into clusters, eventually growing into a larger rural settlement.

The layout tries to balance traditional rural lifestyles with high-quality modern living conditions. The design is not a carbon-copy of local historic buildings, but instead abstracts and refines the features of the traditional local architecture into a contemporary syntax.

Xi Chen
Asia and Australasia

DECEMBER 2021

S	M	T	W	T	F	S
			1	2	3	4
5	6	7	8	9	10	11
12	13	14	15	16	17	18
19	20	21	22	23	24	25
26	27	28	29	30	31	

JANUARY 2022

S	M	T	W	T	F	S
30	31					1
2	3	4	5	6	7	8
9	10	11	12	13	14	15
16	17	18	19	20	21	22
23	24	25	26	27	28	29

FEBRUARY 2022

S	M	T	W	T	F	S
		1	2	3	4	5
6	7	8	9	10	11	12
13	14	15	16	17	18	19
20	21	22	23	24	25	26
27	28					

FERUARY 2022

SUNDAY	MONDAY	TUESDAY	WEDNESDAY	THURSDAY	FRIDAY	SATURDAY
		1	2	3	4	5
6	7	8	9	10	11	12
13	14	15	16	17	18	19
20	21	22	23	24	25	26
27	28					



Landforms

From the bird's-eye view, you can only see the buildings of the garden and the stadium runway, under which is the office space. The office building that maximizes the greening and outdoor space provides a more natural and environment-friendly healthy working and living space.

Chen Guanhong
Asia and Australasia

JANUARY 2022

S	M	T	W	T	F	S
30	31					1
2	3	4	5	6	7	8
9	10	11	12	13	14	15
16	17	18	19	20	21	22
23	24	25	26	27	28	29

FEBRUARY 2022

S	M	T	W	T	F	S
		1	2	3	4	5
6	7	8	9	10	11	12
13	14	15	16	17	18	19
20	21	22	23	24	25	26
27	28					

MARCH 2022

S	M	T	W	T	F	S
		1	2	3	4	5
6	7	8	9	10	11	12
13	14	15	16	17	18	19
20	21	22	23	24	25	26
27	28	29	30	31		

MARCH 2022

SUNDAY	MONDAY	TUESDAY	WEDNESDAY	THURSDAY	FRIDAY	SATURDAY
		1	2	3	4	5
6	7	8	9	10	11	12
13	14	15	16	17	18	19
20	21	22	23	24	25	26
27	28	29	30	31		



Yang Liping Grand Theatre

This is a theater designed by the architect Zhu Pei. It is located near the famous ancient city of Dali in China where ethnic minorities live, between Cangshan Mountain and Erhai Lake, with a special cultural and natural environment. Architect Zhu Pei, as always, emphasized the relationship between architecture and nature in this building, breaking the closed impression of traditional theater in this building, allowing the space to be open and free. The undulating and open space of the theater restores the scenes of local people dancing in the mountains and fields, making it a microcosm of the local people's natural environment and life experience.

Photos are mainly focused on architecture and the surrounding environment, the building in the foreground can be seen as the main body, the intertwined view of the city community and the Cangshan Mountains expressed the environmental information of the place, in the form of the building's undulating floating echo the stretch of the Cangshan Mountains skyline, while the building's open, artificial and natural interlaced space shows the traditional local people's way of life. Architecture fits with the surrounding environment in a natural way, and it has widely recognized as a contemporary building with regional significance in China.

Jin Weiqi

Asia and Australasia

FEBRUARY 2022

S	M	T	W	T	F	S
		1	2	3	4	5
6	7	8	9	10	11	12
13	14	15	16	17	18	19
20	21	22	23	24	25	26
27	28					

MARCH 2022

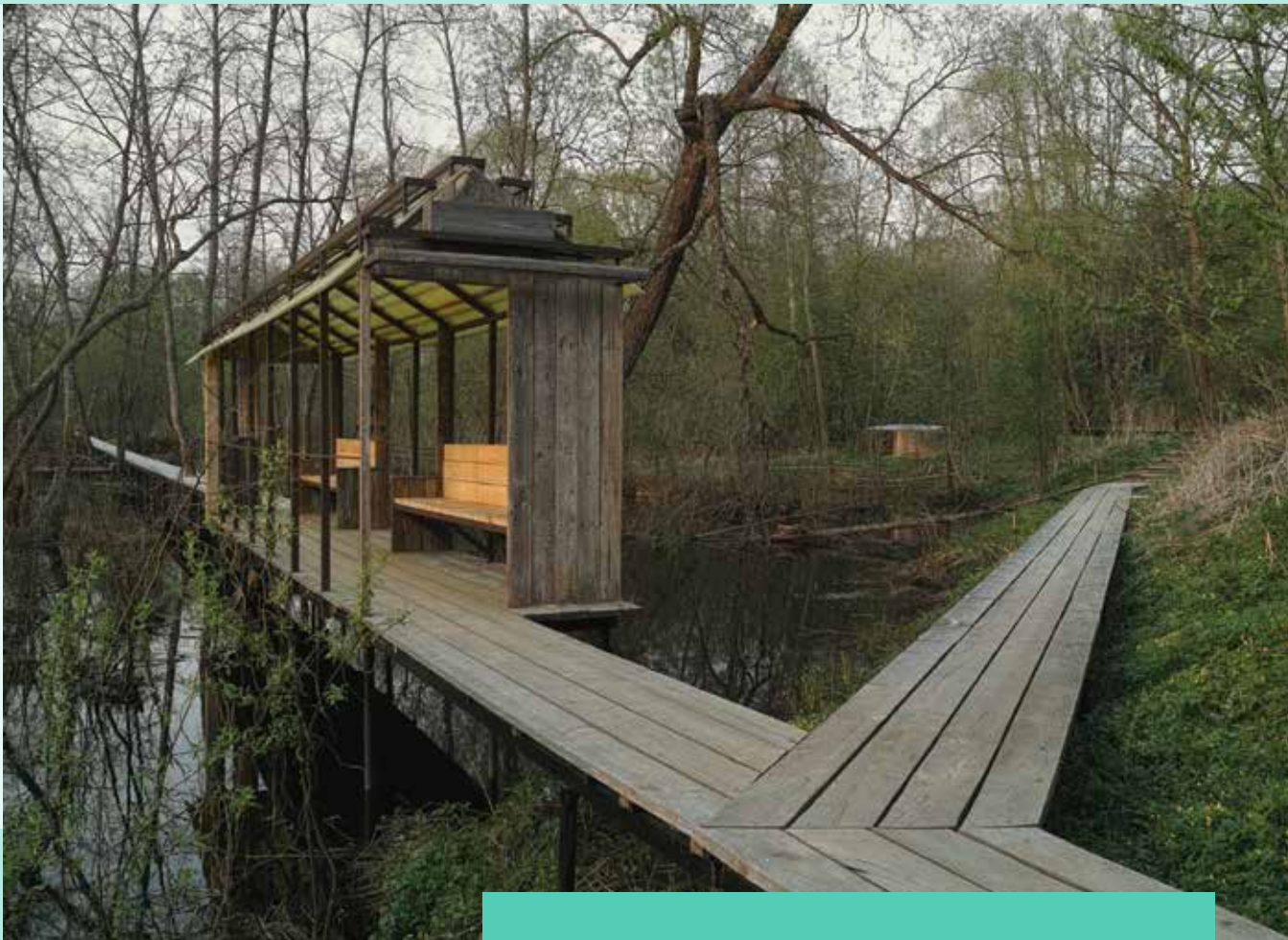
S	M	T	W	T	F	S
		1	2	3	4	5
6	7	8	9	10	11	12
13	14	15	16	17	18	19
20	21	22	23	24	25	26
27	28	29	30	31		

APRIL 2022

S	M	T	W	T	F	S
					1	2
3	4	5	6	7	8	9
10	11	12	13	14	15	16
17	18	19	20	21	22	23
24	25	26	27	28	29	30

APRIL 2022

SUNDAY	MONDAY	TUESDAY	WEDNESDAY	THURSDAY	FRIDAY	SATURDAY
					1	2
3	4	5	6	7	8	9
10	11	12	13	14	15	16
17	18	19	20	21	22	23
24	25	26	27	28	29	30



The Veretyevo Park (2021) is the most recent work by Russian architect Alexander Brodsky. It is an intervention in a forested floodplain near Dubna in the Moscow region. The footpaths over the swamp and pavilions mostly built out of salvaged timber from the nearby deserted villages are subject to natural ageing and change together with plants and trees of the park.

Yuri Palmin
Europe

MARCH 2022

S	M	T	W	T	F	S
		1	2	3	4	5
6	7	8	9	10	11	12
13	14	15	16	17	18	19
20	21	22	23	24	25	26
27	28	29	30	31		

APRIL 2022

S	M	T	W	T	F	S
					1	2
3	4	5	6	7	8	9
10	11	12	13	14	15	16
17	18	19	20	21	22	23
24	25	26	27	28	29	30

MAY 2022

S	M	T	W	T	F	S
1	2	3	4	5	6	7
8	9	10	11	12	13	14
15	16	17	18	19	20	21
22	23	24	25	26	27	28
29	30	31				

MAY 2022

SUNDAY	MONDAY	TUESDAY	WEDNESDAY	THURSDAY	FRIDAY	SATURDAY
1	2	3	4	5	6	7
8	9	10	11	12	13	14
15	16	17	18	19	20	21
22	23	24	25	26	27	28
29	30	31				



When we reflect, true change can happen

During my studies in Berlin for my thesis project - I visited and was massively influenced by the Berlin's Floating University.

Floating University is a place where transdisciplinary research teams and various positions come together to grapple the complex questions of urban practices: How can cities cope with risks, strains and chances of global warming, the shortage of resources, superdiversity and hyper-accelerated development? Which tools do we need to live and work well, and in a resource-efficient manner in the future?

Joshua Griffiths
Europe

APRIL 2022

S	M	T	W	T	F	S
					1	2
3	4	5	6	7	8	9
10	11	12	13	14	15	16
17	18	19	20	21	22	23
24	25	26	27	28	29	30

MAY 2022

S	M	T	W	T	F	S
1	2	3	4	5	6	7
8	9	10	11	12	13	14
15	16	17	18	19	20	21
22	23	24	25	26	27	28
29	30	31				

JUNE 2022

S	M	T	W	T	F	S
			1	2	3	4
5	6	7	8	9	10	11
12	13	14	15	16	17	18
19	20	21	22	23	24	25
26	27	28	29	30		

JUNE 2022

SUNDAY	MONDAY	TUESDAY	WEDNESDAY	THURSDAY	FRIDAY	SATURDAY
			1	2	3	4
5	6	7	8	9	10	11
12	13	14	15	16	17	18
19	20	21	22	23	24	25
26	27	28	29	30		



Learning Below Nature

The new Centre of Creative Learning at Francis Holland School unlocks a dark corner of the school's unique conservation area setting by eking out a partly subterranean space to house a pavilion and rooftop garden, carefully designed to nestle sensitively within an extremely constrained Sloane Square site.

The design vision combines attractive garden spaces at first floor level with informal learning in the space below, which offers opportunities for independent study and group work and provides a distinctive and comfortable area for pupils to sit and read.

The image depicts the learning opportunities available for the students, showing group and computer working areas, and quiet reading areas all set beneath the rooftop garden. Skylights situated throughout the design offer the young students a constant connection with nature and the outside world, providing a visual link to the learning opportunities in abundance above.

Nick Caville
Europe

MAY 2022

S	M	T	W	T	F	S
1	2	3	4	5	6	7
8	9	10	11	12	13	14
15	16	17	18	19	20	21
22	23	24	25	26	27	28
29	30	31				

JUNE 2022

S	M	T	W	T	F	S
			1	2	3	4
5	6	7	8	9	10	11
12	13	14	15	16	17	18
19	20	21	22	23	24	25
26	27	28	29	30		

JULY 2022

S	M	T	W	T	F	S
31					1	2
3	4	5	6	7	8	9
10	11	12	13	14	15	16
17	18	19	20	21	22	23
24	25	26	27	28	29	30

JULY 2022

SUNDAY	MONDAY	TUESDAY	WEDNESDAY	THURSDAY	FRIDAY	SATURDAY
					1	2
3	4	5	6	7	8	9
10	11	12	13	14	15	16
17	18	19	20	21	22	23
24	25	26	27	28	29	30
31						



BREEZE OF HOPE

Terra - The Sustainability Pavilion of Dubai Expo 2020 was designed by the UK-based firm Grimshaw and is a remarkable example of thoughtful responsible architecture. As you approach the building, its unique design features seem to emerge from the ground; inviting you to an introspective journey. Through its extensive educational vocation, the pavilion opens a window towards the Earth's global warming situation and how today's choices will impact the generations to come.

The pavilion's hi-tech style showcases both modern and vernacular strategies to achieve its breathtaking self-sufficient design. This centerpiece, for example, is a contemporary interpretation of the traditional wind tower, used for centuries as a passive way to generate a cooling breeze during the Middle East's hot summers.

While Terra speaks to its visitors with a reassuring calm, it also passes a clear message about the current global situation and how everyone's contribution is crucial in order to preserve the Earth's natural Equilibrium.

Yoann Plourde
Middle East and Africa

JUNE 2022

S	M	T	W	T	F	S
			1	2	3	4
5	6	7	8	9	10	11
12	13	14	15	16	17	18
19	20	21	22	23	24	25
26	27	28	29	30		

JULY 2022

S	M	T	W	T	F	S
31					1	2
3	4	5	6	7	8	9
10	11	12	13	14	15	16
17	18	19	20	21	22	23
24	25	26	27	28	29	30

AUGUST 2022

S	M	T	W	T	F	S
	1	2	3	4	5	6
7	8	9	10	11	12	13
14	15	16	17	18	19	20
21	22	23	24	25	26	27
28	29	30	31			

AUGUST 2022

SUNDAY	MONDAY	TUESDAY	WEDNESDAY	THURSDAY	FRIDAY	SATURDAY
	1	2	3	4	5	6
7	8	9	10	11	12	13
14	15	16	17	18	19	20
21	22	23	24	25	26	27
28	29	30	31			



In Harmony with the Environment

This photo; taken in Tunis Village, Fayoum – February 2020; puts together the vocabulary of the holistic harmonious environmentally-friendly practices, which are adopted intuitively in the Egyptian countryside. These practices may potentially contribute to global warming reduction.

The building materials are natural, local and recyclable ... all building tectonics capitalize on traditional expertise ... using animal remains for oven fuel reduces reliance of fossil resources ... the oven walls are built of mud to reduce thermal emission and fuel consumption ... home-made bakery primarily relies on locally grown grains ... and last, serving the food in the central courtyard turns to be a conventional family celebration in a more plausible micro-climate.

Aya Hany El Senoussy
Middle East and Africa

JULY 2022

S	M	T	W	T	F	S
31					1	2
3	4	5	6	7	8	9
10	11	12	13	14	15	16
17	18	19	20	21	22	23
24	25	26	27	28	29	30

AUGUST 2022

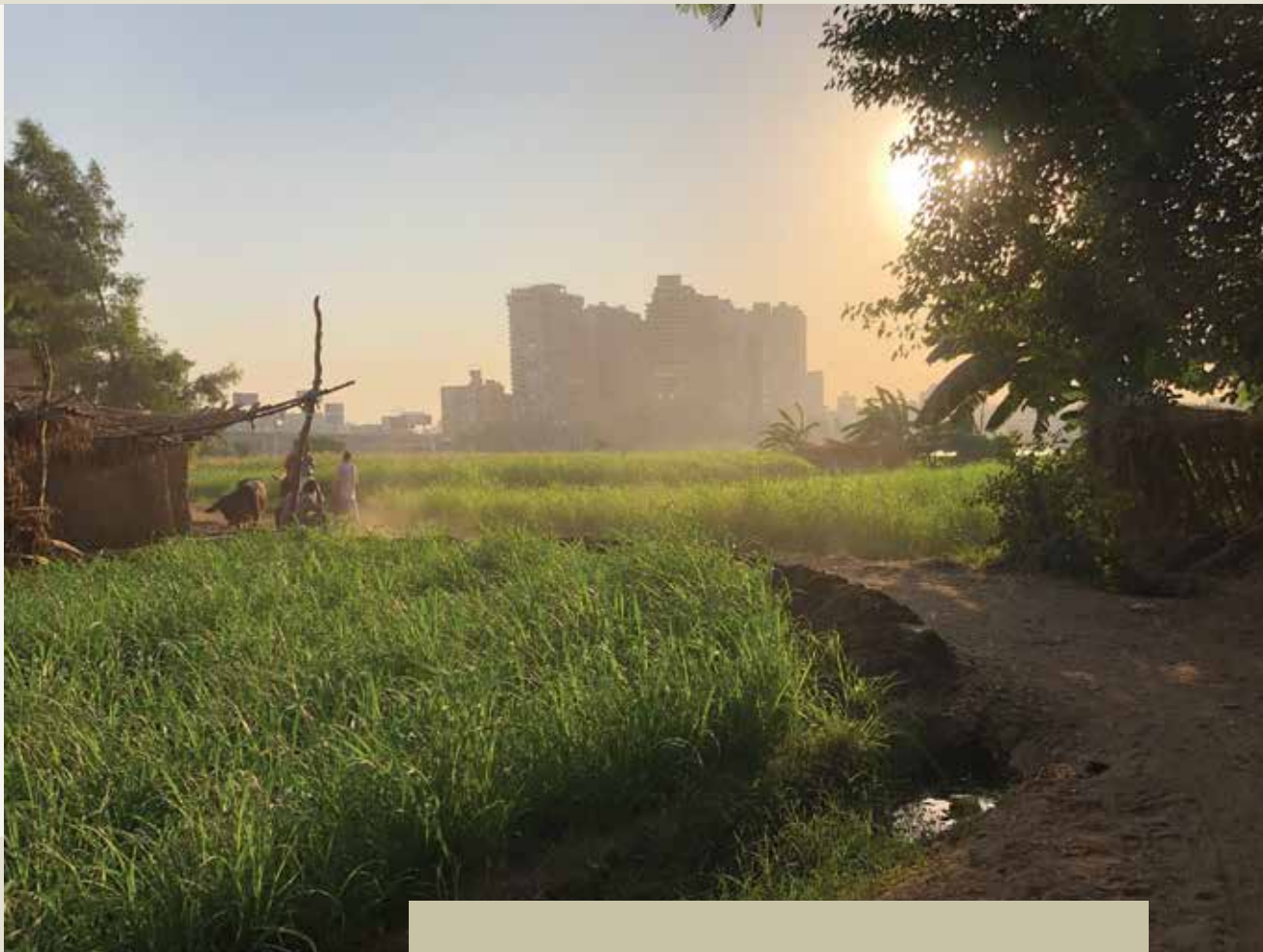
S	M	T	W	T	F	S
	1	2	3	4	5	6
7	8	9	10	11	12	13
14	15	16	17	18	19	20
21	22	23	24	25	26	27
28	29	30	31			

SEPTEMBER 2022

S	M	T	W	T	F	S
				1	2	3
4	5	6	7	8	9	10
11	12	13	14	15	16	17
18	19	20	21	22	23	24
25	26	27	28	29	30	

SEPTEMBER 2022

SUNDAY	MONDAY	TUESDAY	WEDNESDAY	THURSDAY	FRIDAY	SATURDAY
				1	2	3
4	5	6	7	8	9	10
11	12	13	14	15	16	17
18	19	20	21	22	23	24
25	26	27	28	29	30	



Urban vs. Rural

The photo tries to show the contrast between the only rural area (Dahab Island) left facing the madness of the urban density in Cairo.

Ahmed Hassan
Middle East and Africa

AUGUST 2022

S	M	T	W	T	F	S
	1	2	3	4	5	6
7	8	9	10	11	12	13
14	15	16	17	18	19	20
21	22	23	24	25	26	27
28	29	30	31			

SEPTEMBER 2022

S	M	T	W	T	F	S
				1	2	3
4	5	6	7	8	9	10
11	12	13	14	15	16	17
18	19	20	21	22	23	24
25	26	27	28	29	30	

OCTOBER 2022

S	M	T	W	T	F	S
30	31					1
2	3	4	5	6	7	8
9	10	11	12	13	14	15
16	17	18	19	20	21	22
23	24	25	26	27	28	29

OCTOBER 2022

SUNDAY	MONDAY	TUESDAY	WEDNESDAY	THURSDAY	FRIDAY	SATURDAY
						1
2	3	4	5	6	7	8
9	10	11	12	13	14	15
16	17	18	19	20	21	22
23	24	25	26	27	28	29
30	31					



Enlace sensorial

The image was taken in the ecological reserve of Cotopaxi Park, Ecuador, the composition attempts to transmit to the public the delicate intervention on the site, which beyond solving a connection problem between both banks, allows a more intimate relationship with the context, being A scanning process walking in it.

Joel Alonso Rodriguez Davila
Americas

SEPTEMBER 2022

S	M	T	W	T	F	S
				1	2	3
4	5	6	7	8	9	10
11	12	13	14	15	16	17
18	19	20	21	22	23	24
25	26	27	28	29	30	

OCTOBER 2022

S	M	T	W	T	F	S
30	31					1
2	3	4	5	6	7	8
9	10	11	12	13	14	15
16	17	18	19	20	21	22
23	24	25	26	27	28	29

NOVEMBER 2022

S	M	T	W	T	F	S
		1	2	3	4	5
6	7	8	9	10	11	12
13	14	15	16	17	18	19
20	21	22	23	24	25	26
27	28	29	30			

NOVEMBER 2022

SUNDAY	MONDAY	TUESDAY	WEDNESDAY	THURSDAY	FRIDAY	SATURDAY
		1	2	3	4	5
6	7	8	9	10	11	12
13	14	15	16	17	18	19
20	21	22	23	24	25	26
27	28	29	30			



Beach kiosk and boat refuge in Jaguanum Island

“One of the most difficult questions brought by the Anthropocene is: how to deal with global inequality”
Lewis & Maslin, 2018.

The beach kiosk and boat refuge was created for a caicara couple in the Island of Jaguanum in Brazil. Caicaras are the descendants of indigenous people, Europeans and Africans – who are known as the original inhabitants of the coastal south-eastern and southern regions of Brazil. Their traditional way of life based on subsistence agriculture, hunting and fishing is threatened by real estate speculation, restrictive laws and declining fish stocks. I designed and built this project in partnership with Estudio Flume and in collaboration with the community. It consists of a small multifunctional space, kitchen, toilet and sitting area. The project was conceived with a strong focus on sustainability, incorporating passive thermal control strategies, water harvesting, natural treatment of grey waters and the use of locally sourced materials, such as the bamboo used for the cladding. Sustainable architecture in this context minimises its environmental impact though it also recognises the central role traditional communities play in the protection of the natural habitat. Hence, the kiosk fits within a wider socio-economic and cultural framework aiming to develop a sustainable income generation opportunity for the couple and other fishermen in the area. It hopes to promote the local produce and traditional food, attracting tourists interested in the caicaras culture and further protecting the natural environment.

German Nieva
Americas

OCTOBER 2022

S	M	T	W	T	F	S
30	31					1
2	3	4	5	6	7	8
9	10	11	12	13	14	15
16	17	18	19	20	21	22
23	24	25	26	27	28	29

NOVEMBER 2022

S	M	T	W	T	F	S
		1	2	3	4	5
6	7	8	9	10	11	12
13	14	15	16	17	18	19
20	21	22	23	24	25	26
27	28	29	30			

DECEMBER 2022

S	M	T	W	T	F	S
				1	2	3
4	5	6	7	8	9	10
11	12	13	14	15	16	17
18	19	20	21	22	23	24
25	26	27	28	29	30	31

DECEMBER 2022

SUNDAY	MONDAY	TUESDAY	WEDNESDAY	THURSDAY	FRIDAY	SATURDAY
				1	2	3
4	5	6	7	8	9	10
11	12	13	14	15	16	17
18	19	20	21	22	23	24
25	26	27	28	29	30	31



Our Arctic

A lot can be learned about sustainability and sustainable practices from the native/indigenous tribes of Alaska. This photograph is a story of their sustainable practices in their community and their survival.

I have had the opportunity to spend time with the Iñupiat community and getting to know their culture and way of life. The photograph in this entry represents the symbolism of their community in the village of Barrow, Alaska. Barrow is a small village on the Arctic ocean that is accessible only by air or by the ocean only certain times of the year. The locals rely on whaling, fishing and hunting as the means of living and survival. The archway represents the entry/gateway to the village when they are out whaling. The archway is made of whale bones. The two boats on either side of the Arch/gateway are the boats used for summer and winter whaling. During the winter, they stretch the seal skin over the boats and take it for whaling and during the summer, they use the boats with wood planking and copper nails. These communities believe in sustainable living, gathering and not wasting. Their survival depends on sea life and wild life in the area which in turn depend on its prey. A change in climate tips the balance of scales as to how these communities survive in the future.

This photograph was taken when it was -25C

Kaushik Amruthur
Americas

NOVEMBER 2022

S	M	T	W	T	F	S
		1	2	3	4	5
6	7	8	9	10	11	12
13	14	15	16	17	18	19
20	21	22	23	24	25	26
27	28	29	30			

DECEMBER 2022

S	M	T	W	T	F	S
				1	2	3
4	5	6	7	8	9	10
11	12	13	14	15	16	17
18	19	20	21	22	23	24
25	26	27	28	29	30	31

JANUARY 2023

S	M	T	W	T	F	S
1	2	3	4	5	6	7
8	9	10	11	12	13	14
15	16	17	18	19	20	21
22	23	24	25	26	27	28
29	30	31				

2023

JANUARY

S	M	T	W	T	F	S
30	31					1
2	3	4	5	6	7	8
9	10	11	12	13	14	15
16	17	18	19	20	21	22
23	24	25	26	27	28	29

FEBRUARY

S	M	T	W	T	F	S
		1	2	3	4	5
6	7	8	9	10	11	12
13	14	15	16	17	18	19
20	21	22	23	24	25	26
27	28					

MARCH

S	M	T	W	T	F	S
		1	2	3	4	5
6	7	8	9	10	11	12
13	14	15	16	17	18	19
20	21	22	23	24	25	26
27	28	29	30	31		

APRIL

S	M	T	W	T	F	S
					1	2
3	4	5	6	7	8	9
10	11	12	13	14	15	16
17	18	19	20	21	22	23
24	25	26	27	28	29	30

MAY

S	M	T	W	T	F	S
1	2	3	4	5	6	7
8	9	10	11	12	13	14
15	16	17	18	19	20	21
22	23	24	25	26	27	28
29	30	31				

JUNE

S	M	T	W	T	F	S
			1	2	3	4
5	6	7	8	9	10	11
12	13	14	15	16	17	18
19	20	21	22	23	24	25
26	27	28	29	30		

JULY

S	M	T	W	T	F	S
31					1	2
3	4	5	6	7	8	9
10	11	12	13	14	15	16
17	18	19	20	21	22	23
24	25	26	27	28	29	30

AUGUST

S	M	T	W	T	F	S
	1	2	3	4	5	6
7	8	9	10	11	12	13
14	15	16	17	18	19	20
21	22	23	24	25	26	27
28	29	30	31			

SEPTEMBER

S	M	T	W	T	F	S
				1	2	3
4	5	6	7	8	9	10
11	12	13	14	15	16	17
18	19	20	21	22	23	24
25	26	27	28	29	30	

OCTOBER

S	M	T	W	T	F	S
30	31					1
2	3	4	5	6	7	8
9	10	11	12	13	14	15
16	17	18	19	20	21	22
23	24	25	26	27	28	29

NOVEMBER

S	M	T	W	T	F	S
		1	2	3	4	5
6	7	8	9	10	11	12
13	14	15	16	17	18	19
20	21	22	23	24	25	26
27	28	29	30			

DECEMBER

S	M	T	W	T	F	S
				1	2	3
4	5	6	7	8	9	10
11	12	13	14	15	16	17
18	19	20	21	22	23	24
25	26	27	28	29	30	31